

Product datasheet for **TA334635**

SLC25A34 Rabbit Polyclonal Antibody

Product data:

Product Type:	Primary Antibodies
Applications:	WB
Recommended Dilution:	WB
Reactivity:	Human
Host:	Rabbit
Isotype:	IgG
Clonality:	Polyclonal
Immunogen:	The immunogen for anti-SLC25A34 antibody: synthetic peptide directed towards the middle region of human SLC25A34. Synthetic peptide located within the following region: TDCMVKIWRQEGPLALYKGLGPAYLRLGPHTILSMLFWDELRLKLAGRAQH
Formulation:	Liquid. Purified antibody supplied in 1x PBS buffer with 0.09% (w/v) sodium azide and 2% sucrose. <i>Note that this product is shipped as lyophilized powder to China customers.</i>
Purification:	Affinity Purified
Conjugation:	Unconjugated
Storage:	Store at -20°C as received.
Stability:	Stable for 12 months from date of receipt.
Predicted Protein Size:	32 kDa
Gene Name:	solute carrier family 25 member 34
Database Link:	NP_997231 Entrez Gene 284723 Human Q6PIV7
Background:	SLC25A34 is a multi-pass membrane protein. It belongs to the mitochondrial carrier family and contains 3 Solcar repeats. The function of the SLC25A34 protein remains unknown. SLC25A34 belongs to the SLC25 family of mitochondrial carrier proteins (Haitina et al., 2006 [PubMed 16949250]). [supplied by OMIM]
Synonyms:	RP11-169K16.2

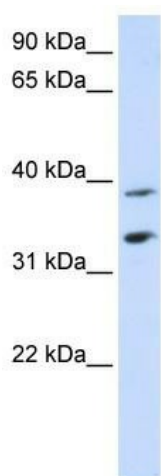


[View online »](#)

Note: Immunogen Sequence Homology: Dog: 100%; Pig: 100%; Rat: 100%; Horse: 100%; Human: 100%; Mouse: 100%; Rabbit: 100%; Bovine: 93%; Guinea pig: 93%; Yeast: 82%; Zebrafish: 79%

Protein Families: Transmembrane

Product images:



WB Suggested Anti-SLC25A34 Antibody Titration:
0.2-1 ug/ml; ELISA Titer: 1: 312500; Positive
Control: Human Placenta