

Product datasheet for TA334634

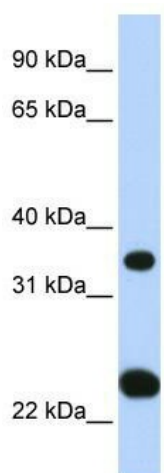
SLC25A35 Rabbit Polyclonal Antibody

Product data:

Product Type:	Primary Antibodies
Applications:	WB
Recommended Dilution:	WB
Reactivity:	Human
Host:	Rabbit
Isotype:	IgG
Clonality:	Polyclonal
Immunogen:	The immunogen for anti-SLC25A35 antibody: synthetic peptide directed towards the N terminal of human SLC25A35. Synthetic peptide located within the following region: DFLMSGLAACGACVFTNPLEVVKTRMQLQGELQAPGTYQRHYRNVFHAFL
Formulation:	Liquid. Purified antibody supplied in 1x PBS buffer with 0.09% (w/v) sodium azide and 2% sucrose.
Purification:	Affinity Purified
Conjugation:	Unconjugated
Storage:	Store at -20°C as received.
Stability:	Stable for 12 months from date of receipt.
Predicted Protein Size:	31 kDa
Gene Name:	solute carrier family 25 member 35
Database Link:	NP_958928 Entrez Gene 399512 Human Q3KQZ1
Background:	SLC25A35 belongs to the mitochondrial carrier family. It contains 3 Solcar repeats. It is a multi-pass membrane protein. The functions of SLC25A35 remain unknown. SLC25A35 belongs to the SLC25 family of mitochondrial carrier proteins (Haitina et al., 2006 [PubMed 16949250]). [supplied by OMIM]
Synonyms:	FLJ40217; MGC120446; MGC120448
Note:	Immunogen Sequence Homology: Pig: 100%; Rat: 100%; Human: 100%; Mouse: 100%; Dog: 93%; Horse: 93%; Bovine: 93%; Rabbit: 93%; Guinea pig: 93%


[View online »](#)

Product images:



WB Suggested Anti-SLC25A35 Antibody Titration:
0.2-1 ug/ml; ELISA Titer: 1: 312500; Positive
Control: Human Liver