

Product datasheet for **TA334633**

SLC26A5 Rabbit Polyclonal Antibody

Product data:

Product Type:	Primary Antibodies
Applications:	IHC, WB
Recommended Dilution:	WB, IHC
Reactivity:	Human
Host:	Rabbit
Isotype:	IgG
Clonality:	Polyclonal
Immunogen:	The immunogen for anti-SLC26A5 antibody: synthetic peptide directed towards the middle region of human SLC26A5. Synthetic peptide located within the following region: FSVTISMAKTLANKHGYQVDGNQELIALGLCNSIGSLFQTFSISCSLSRS
Formulation:	Liquid. Purified antibody supplied in 1x PBS buffer with 0.09% (w/v) sodium azide and 2% sucrose. <i>Note that this product is shipped as lyophilized powder to China customers.</i>
Purification:	Protein A purified
Conjugation:	Unconjugated
Storage:	Store at -20°C as received.
Stability:	Stable for 12 months from date of receipt.
Predicted Protein Size:	81 kDa
Gene Name:	solute carrier family 26 member 5
Database Link:	NP_945350 Entrez Gene 375611 Human P58743



[View online »](#)

Background:

SLC26A5 is a member of the SLC26A/SulP transporter family. SLC26A5 is specifically expressed in outer hair cells (OHCs) of the cochlea and is essential in auditory processing. Intracellular anions are thought to act as extrinsic voltage sensors, which bind to this protein and trigger the conformational changes required for rapid length changes in OHCs. Mutations in its gene have been associated with non-syndromic hearing loss. This gene is a member of the SLC26A/SulP transporter family. It encodes a protein that is specifically expressed in outer hair cells (OHCs) of the cochlea and is essential in auditory processing. Intracellular anions are thought to act as extrinsic voltage sensors, which bind to this protein and trigger the conformational changes required for rapid length changes in OHCs. Mutations in this gene have been associated with non-syndromic hearing loss. Alternate transcriptional splice variants, encoding different isoforms, have been characterized.

Synonyms:

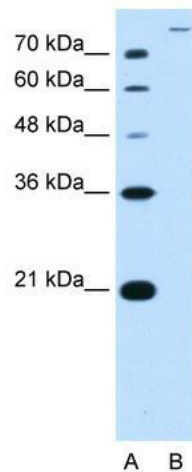
DFNB61; PRES

Note:

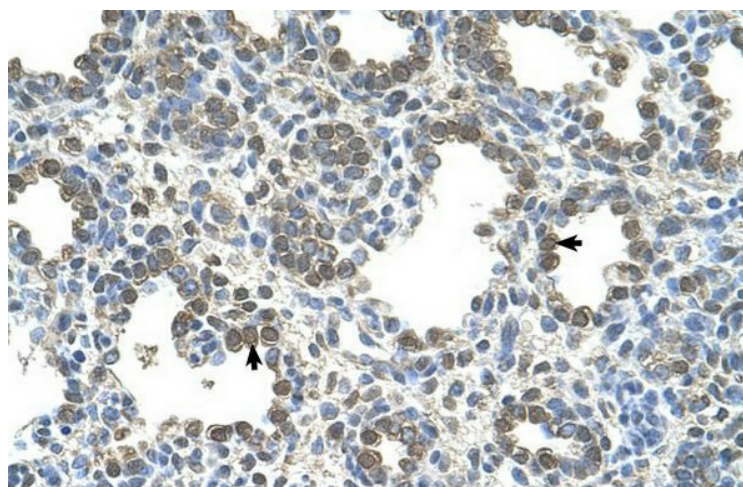
Immunogen Sequence Homology: Dog: 100%; Pig: 100%; Rat: 100%; Horse: 100%; Human: 100%; Mouse: 100%; Bovine: 100%; Rabbit: 100%; Guinea pig: 100%

Protein Families:

Transmembrane

Product images:

WB Suggested Antibody Titration: 2.5 ug/ml;
Positive Control: HepG2



Human Lung