

Product datasheet for TA334632

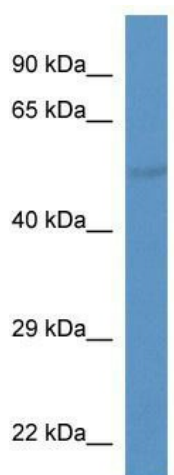
SLC37A2 Rabbit Polyclonal Antibody

Product data:

Product Type:	Primary Antibodies
Applications:	WB
Recommended Dilution:	WB
Reactivity:	Mouse
Host:	Rabbit
Isotype:	IgG
Clonality:	Polyclonal
Immunogen:	The immunogen for anti-Slc37a2 antibody: synthetic peptide corresponding to a region of Mouse. Synthetic peptide located within the following region: FSLCLLFAKLVSYTFLYWLPLYIFNVAHFSAKEAGDLSTLFDVGGIIGGI
Formulation:	Liquid. Purified antibody supplied in 1x PBS buffer with 0.09% (w/v) sodium azide and 2% sucrose.
Purification:	Affinity Purified
Conjugation:	Unconjugated
Storage:	Store at -20°C as received.
Stability:	Stable for 12 months from date of receipt.
Predicted Protein Size:	55 kDa
Gene Name:	solute carrier family 37 member 2
Database Link:	NP_938018 Entrez Gene 56857 Mouse Q8TED4
Background:	The function of this protein remains unknown.
Synonyms:	pp11662
Note:	Immunogen Sequence Homology: Human: 100%; Dog: 93%; Rat: 93%; Mouse: 93%; Rabbit: 93%; Pig: 86%; Horse: 86%; Guinea pig: 86%; Bovine: 79%; Zebrafish: 79%
Protein Families:	Transmembrane



[View online »](#)

Product images:

WB Suggested Anti-Slc37a2 Antibody; Titration:
1.0 ug/ml; Positive Control: Mouse Liver