

Product datasheet for **TA334631**

SLC19A1 Rabbit Polyclonal Antibody

Product data:

Product Type:	Primary Antibodies
Applications:	IHC, WB
Recommended Dilution:	WB, IHC
Reactivity:	Human
Host:	Rabbit
Isotype:	IgG
Clonality:	Polyclonal
Immunogen:	The immunogen for anti-SLC19A1 antibody: synthetic peptide directed towards the N terminal of human SLC19A1. Synthetic peptide located within the following region: MVPSSPAVEKQVPVEPGPDPELRSWRHLVLCYLCFYGFMAQIRPGESFITP
Formulation:	Liquid. Purified antibody supplied in 1x PBS buffer with 0.09% (w/v) sodium azide and 2% sucrose.
Purification:	Protein A purified
Conjugation:	Unconjugated
Storage:	Store at -20°C as received.
Stability:	Stable for 12 months from date of receipt.
Predicted Protein Size:	65 kDa
Gene Name:	solute carrier family 19 member 1
Database Link:	NP_919231 Entrez Gene 6573 Human P41440



[View online »](#)

Background:

Transport of folate compounds into mammalian cells can occur via receptor-mediated or carrier-mediated mechanisms. A functional coordination between these 2 mechanisms has been proposed to be the method of folate uptake in certain cell types. Methotrexate (MTX) is an antifolate chemotherapeutic agent that is actively transported by the carrier-mediated uptake system. SLC19A1 plays a role in maintaining intracellular concentrations of folate. Transport of folate compounds into mammalian cells can occur via receptor-mediated (see MIM 136430) or carrier-mediated mechanisms. A functional coordination between these 2 mechanisms has been proposed to be the method of folate uptake in certain cell types. Methotrexate (MTX) is an antifolate chemotherapeutic agent that is actively transported by the carrier-mediated uptake system. RFC1 plays a role in maintaining intracellular concentrations of folate. [supplied by OMIM]

Synonyms:

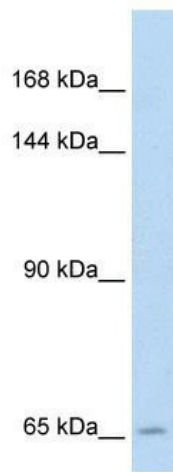
CHMD; FOLT; IFC1; REFC; RFC1

Note:

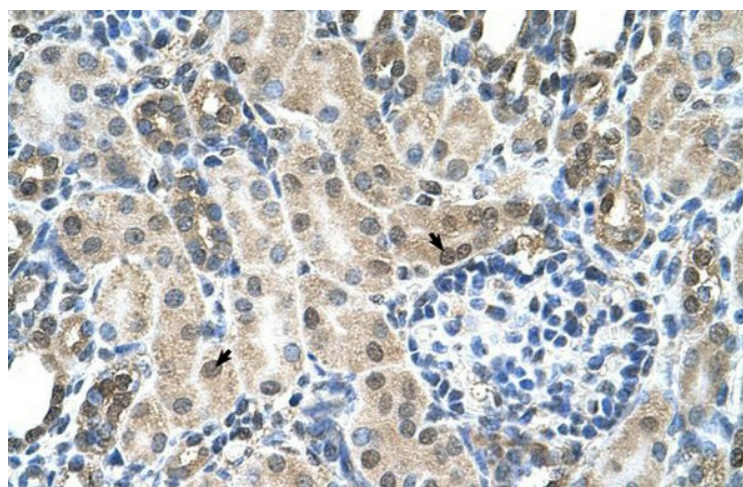
Immunogen Sequence Homology: Human: 100%

Protein Families:

Stem cell - Pluripotency, Transmembrane

Product images:

WB Suggested Anti-SLC19A1 Antibody Titration: 5.0 ug/ml; Positive Control: Jurkat cell lysate; SLC19A1 is strongly supported by BioGPS gene expression data to be expressed in Human Jurkat cells



Human kidney