

## Product datasheet for **TA334629**

### SLC35E2A Rabbit Polyclonal Antibody

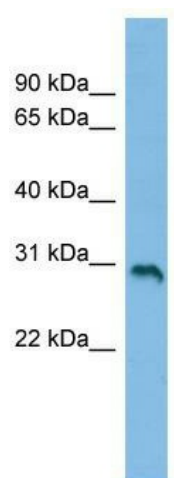
#### Product data:

Product Type:	Primary Antibodies
Applications:	WB
Recommended Dilution:	WB
Reactivity:	Human
Host:	Rabbit
Isotype:	IgG
Clonality:	Polyclonal
Immunogen:	The immunogen for anti-SLC35E2 antibody: synthetic peptide directed towards the middle region of human SLC35E2. Synthetic peptide located within the following region: AAASDRRSPVPPSERHGVRPHGENLPGDFQVPQALHRVALSMALPCPMLP
Formulation:	Liquid. Purified antibody supplied in 1x PBS buffer with 0.09% (w/v) sodium azide and 2% sucrose. <i>Note that this product is shipped as lyophilized powder to China customers.</i>
Purification:	Affinity Purified
Conjugation:	Unconjugated
Storage:	Store at -20°C as received.
Stability:	Stable for 12 months from date of receipt.
Predicted Protein Size:	29 kDa
Gene Name:	solute carrier family 35 member E2
Database Link:	<a href="#">NP_878258</a> <a href="#">Entrez Gene 9906 Human</a> <a href="#">P0CK97</a>
Background:	SLC35E2 is a putative transporter.
Synonyms:	DKFZp686M0869; FLJ34996; FLJ44537; KIAA0447; MGC104754; MGC117254; MGC126715; MGC138494
Note:	Immunogen Sequence Homology: Human: 100%; Horse: 79%; Rabbit: 79%
Protein Families:	Transmembrane



[View online »](#)

## Product images:



WB Suggested Anti-SLC35E2 Antibody Titration:  
0.2-1 ug/ml; ELISA Titer: 1: 1562500; Positive  
Control: COLO205 cell lysate