

Product datasheet for **TA334628**

SLC6A15 Rabbit Polyclonal Antibody

Product data:

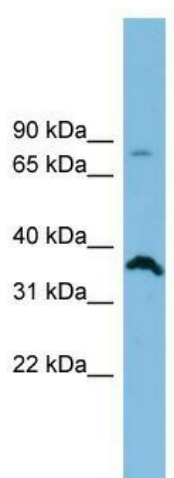
Product Type:	Primary Antibodies
Applications:	WB
Recommended Dilution:	WB
Reactivity:	Human
Host:	Rabbit
Isotype:	IgG
Clonality:	Polyclonal
Immunogen:	The immunogen for anti-SLC6A15 antibody: synthetic peptide directed towards the middle region of human SLC6A15. Synthetic peptide located within the following region: YISPLMLLSLLIASVVMGLSPPGYNAWIEDKASEEFLSYPTWGLVVCVS
Formulation:	Liquid. Purified antibody supplied in 1x PBS buffer with 0.09% (w/v) sodium azide and 2% sucrose. <i>Note that this product is shipped as lyophilized powder to China customers.</i>
Purification:	Affinity Purified
Conjugation:	Unconjugated
Storage:	Store at -20°C as received.
Stability:	Stable for 12 months from date of receipt.
Predicted Protein Size:	82 kDa
Gene Name:	solute carrier family 6 member 15
Database Link:	NP_877499 Entrez Gene 55117 Human Q9H2J7
Background:	SLC6A15 shows structural characteristics of an Na(+) and Cl(-)-dependent neurotransmitter transporter, including 12 transmembrane (TM) domains, intracellular N and C termini, and large extracellular loops containing multiple N-glycosylation sites.
Synonyms:	hv7-3; NTT73; SBAT1; V7-3
Note:	Immunogen Sequence Homology: Pig: 100%; Horse: 100%; Human: 100%; Rabbit: 100%; Bovine: 92%; Dog: 86%; Rat: 85%; Mouse: 85%; Guinea pig: 85%



[View online »](#)

Protein Families: Druggable Genome, Transmembrane

Product images:



WB Suggested Anti-SLC6A15 Antibody Titration:
0.2-1 ug/ml; ELISA Titer: 1: 1562500; Positive
Control: HepG2 cell lysate