

Product datasheet for **TA334627**

SLC6A15 Rabbit Polyclonal Antibody

Product data:

Product Type:	Primary Antibodies
Applications:	WB
Recommended Dilution:	WB
Reactivity:	Mouse
Host:	Rabbit
Isotype:	IgG
Clonality:	Polyclonal
Immunogen:	The immunogen for anti-Slc6a15 antibody: synthetic peptide corresponding to a region of Mouse. Synthetic peptide located within the following region: VEDYRLVYDIIQVKKEEFVLHLNACQIEDELNKAVQGTGLAFIAFTEA
Formulation:	Liquid. Purified antibody supplied in 1x PBS buffer with 0.09% (w/v) sodium azide and 2% sucrose. <i>Note that this product is shipped as lyophilized powder to China customers.</i>
Purification:	Affinity Purified
Conjugation:	Unconjugated
Storage:	Store at -20°C as received.
Stability:	Stable for 12 months from date of receipt.
Predicted Protein Size:	82 kDa
Gene Name:	solute carrier family 6 member 15
Database Link:	NP_877499 Entrez Gene 103098 Mouse Q9H2J7

Background: Slc6a15 functions as a sodium-dependent neutral amino acid transporter. It exhibits preference for methionine and for the branched-chain amino acids, particularly leucine, valine and isoleucine. It mediates the saturable, pH-sensitive and electrogenic cotransport of proline and sodium ions with a stoichiometry of 1:1. Slc6a15 may have a role as transporter for neurotransmitter precursors into neurons. In contrast to other members of the neurotransmitter transporter family, Slc6a15 does not appear to be chloride-dependent.



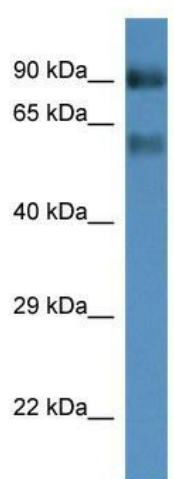
[View online »](#)

Synonyms: hv7-3; NTT73; SBAT1; V7-3

Note: Immunogen Sequence Homology: Human: 100%; Pig: 86%; Rat: 86%; Horse: 86%; Mouse: 86%; Bovine: 86%; Zebrafish: 86%; Rabbit: 79%; Guinea pig: 79%

Protein Families: Druggable Genome, Transmembrane

Product images:



WB Suggested Anti-Slc6a15 Antibody; Titration: 1.0 ug/ml; Positive Control: Mouse Kidney