

Product datasheet for **TA334626**

SLC6A18 Rabbit Polyclonal Antibody

Product data:

Product Type:	Primary Antibodies
Applications:	IHC, WB
Recommended Dilution:	WB, IHC
Reactivity:	Human
Host:	Rabbit
Isotype:	IgG
Clonality:	Polyclonal
Immunogen:	The immunogen for anti-SLC6A18 antibody: synthetic peptide directed towards the middle region of human SLC6A18. Synthetic peptide located within the following region: MHLNATWPKRVAQLPLKACLEDFLDKSASGPGGLAFVVFETETDLHMPGAP
Formulation:	Liquid. Purified antibody supplied in 1x PBS buffer with 0.09% (w/v) sodium azide and 2% sucrose. <i>Note that this product is shipped as lyophilized powder to China customers.</i>
Purification:	Protein A purified
Conjugation:	Unconjugated
Storage:	Store at -20°C as received.
Stability:	Stable for 12 months from date of receipt.
Predicted Protein Size:	69 kDa
Gene Name:	solute carrier family 6 member 18
Database Link:	NP_872438 Entrez Gene 348932 Human Q96N87
Background:	The function remains unknown.
Synonyms:	Xtrp2
Note:	Immunogen Sequence Homology: Rat: 100%; Human: 100%; Mouse: 100%; Dog: 93%; Pig: 93%; Horse: 93%; Bovine: 93%
Protein Families:	Druggable Genome, Transmembrane

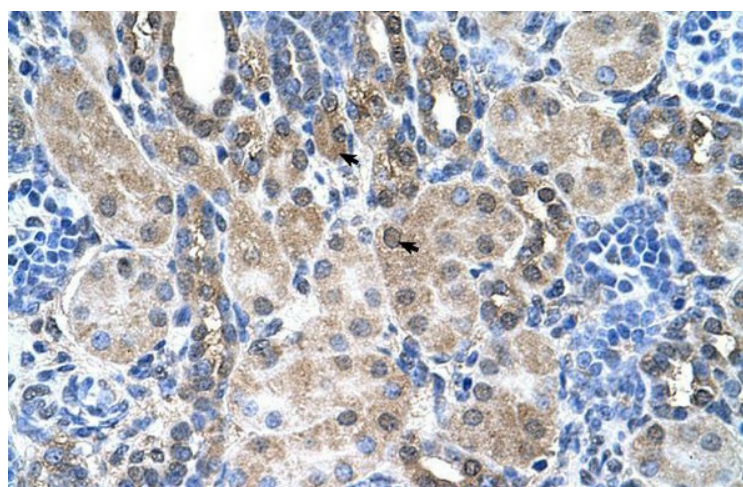


[View online »](#)

Product images:



WB Suggested Anti-SLC6A18 Antibody Titration:
1.25 ug/ml; Positive Control: Jurkat cell lysate



Human kidney