

## Product datasheet for **TA334625**

### SLC46A3 Rabbit Polyclonal Antibody

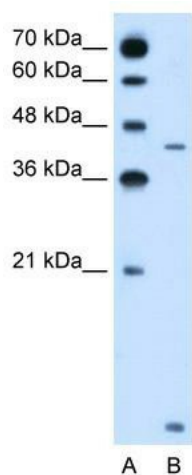
#### Product data:

|                         |  |
|-------------------------|--|
| Product Type:           | Primary Antibodies   |
| Applications:           | IHC, WB  |
| Recommended Dilution:   | WB, IHC  |
| Reactivity:             | Human  |
| Host:                   | Rabbit   |
| Isotype:                | IgG  |
| Clonality:              | Polyclonal   |
| Immunogen:              | The immunogen for anti-SLC46A3 antibody: synthetic peptide directed towards the N terminal of human SLC46A3. Synthetic peptide located within the following region: MKILFVEPAIFLSAFAMTLTGPLTTQYVYRRIWEETGNYTFSSDSNISEC |
| Formulation:            | Liquid. Purified antibody supplied in 1x PBS buffer with 0.09% (w/v) sodium azide and 2% sucrose.  |
| Purification:           | Protein A purified   |
| Conjugation:            | Unconjugated   |
| Storage:                | Store at -20°C as received.  |
| Stability:              | Stable for 12 months from date of receipt.   |
| Predicted Protein Size: | 51 kDa   |
| Gene Name:              | solute carrier family 46 member 3  |
| Database Link:          | <a href="#">NP_861450</a><br><a href="#">Entrez Gene 283537 Human</a><br><a href="#">Q7Z3Q1</a>  |
| Background:             | The function remains unknown.  |
| Synonyms:               | FKSG16   |
| Note:                   | Immunogen Sequence Homology: Human: 100%; Mouse: 85%; Dog: 79%; Rat: 79%; Rabbit: 79%  |
| Protein Families:       | Transmembrane  |

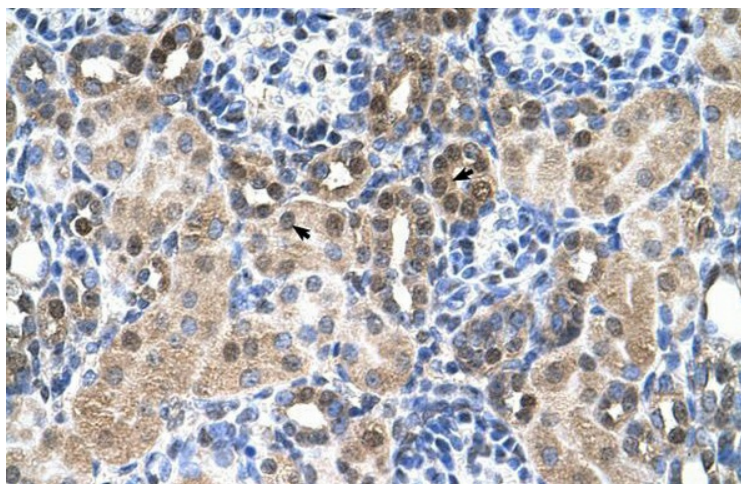


[View online »](#)

## Product images:



WB Suggested Anti-SLC46A3 Antibody Titration: 2.5 ug/ml; Positive Control: Jurkat cell lysate; SLC46A3 is supported by BioGPS gene expression data to be expressed in Jurkat



Human kidney