

Product datasheet for **TA334624**

SLC36A2 Rabbit Polyclonal Antibody

Product data:

Product Type:	Primary Antibodies
Applications:	IHC, WB
Recommended Dilution:	WB, IHC
Reactivity:	Human
Host:	Rabbit
Isotype:	IgG
Clonality:	Polyclonal
Immunogen:	The immunogen for anti-SLC36A2 antibody: synthetic peptide directed towards the N terminal of human SLC36A2. Synthetic peptide located within the following region: TFLDESPSESAGLKKTKGITVFQALIHVLKGNMGTGILGLPLAVKNAGIL
Formulation:	Liquid. Purified antibody supplied in 1x PBS buffer with 0.09% (w/v) sodium azide and 2% sucrose.
Purification:	Affinity Purified
Conjugation:	Unconjugated
Storage:	Store at -20°C as received.
Stability:	Stable for 12 months from date of receipt.
Predicted Protein Size:	53 kDa
Gene Name:	solute carrier family 36 member 2
Database Link:	NP_861441 Entrez Gene 153201 Human Q495M3
Background:	SLC36A2 is involved in a pH-dependent electrogenic neuronal transport and sequestration of small amino acids amino acids such as glycine, alanine and proline. SLC36A2 is inhibited by sarcosine.
Synonyms:	PAT2; TRAMD1
Note:	Immunogen Sequence Homology: Human: 100%
Protein Families:	Transmembrane

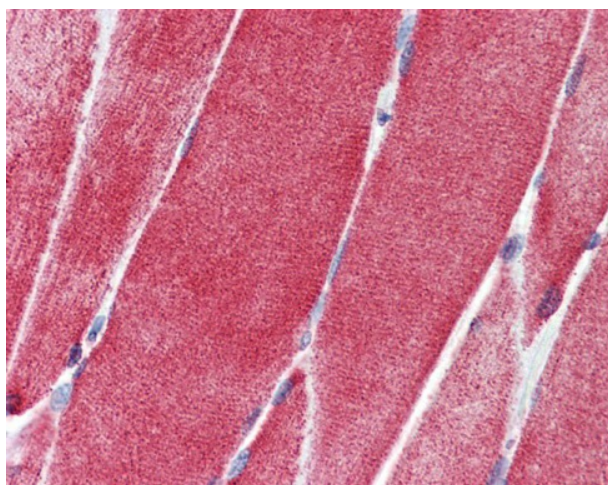


[View online »](#)

Product images:



WB Suggested Anti-SLC36A2 Antibody Titration:
0.2-1 ug/ml; ELISA Titer: 1: 312500; Positive
Control: HepG2 cell lysate



Skeletal muscle