

## Product datasheet for **TA334623**

### SLC36A3 Rabbit Polyclonal Antibody

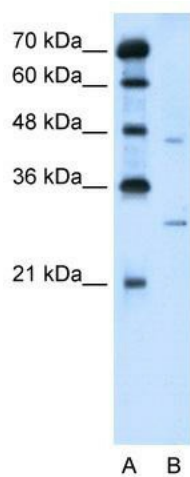
#### Product data:

Product Type:	Primary Antibodies
Applications:	IHC, WB
Recommended Dilution:	WB, IHC
Reactivity:	Human
Host:	Rabbit
Isotype:	IgG
Clonality:	Polyclonal
Immunogen:	The immunogen for anti-SLC36A3 antibody: synthetic peptide directed towards the N terminal of human SLC36A3. Synthetic peptide located within the following region: MSLGLRDYNSLNSLDNGPQSPSESSSITSENVHPAGEAGLSMMQTLIH
Formulation:	Liquid. Purified antibody supplied in 1x PBS buffer with 0.09% (w/v) sodium azide and 2% sucrose.
Purification:	Protein A purified
Conjugation:	Unconjugated
Storage:	Store at -20°C as received.
Stability:	Stable for 12 months from date of receipt.
Predicted Protein Size:	52 kDa
Gene Name:	solute carrier family 36 member 3
Database Link:	<a href="#">NP_861439</a> <a href="#">Entrez Gene 285641 Human</a> <a href="#">Q495N2</a>
Background:	The function remains unknown.
Synonyms:	PAT3; TRAMD2; tramdorin2
Note:	Immunogen Sequence Homology: Human: 100%; Pig: 80%
Protein Families:	Transmembrane

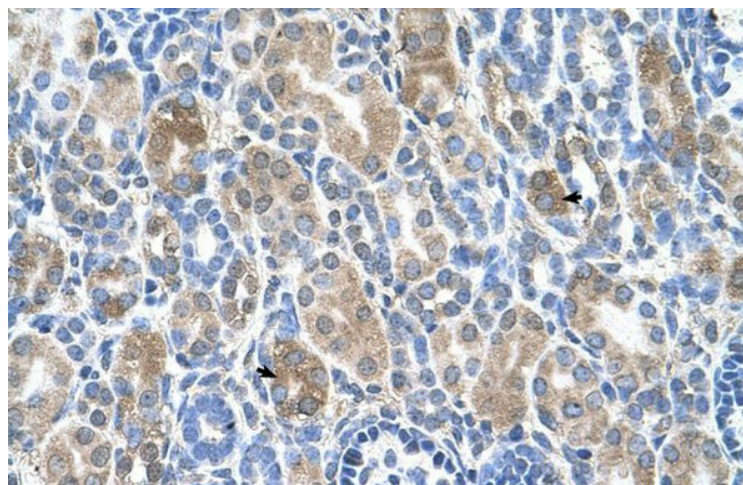


[View online »](#)

## Product images:



WB Suggested Anti-SLC36A3 Antibody Titration: 5.0 ug/ml; Positive Control: Jurkat cell lysate



Human kidney