

Product datasheet for TA334622

SLC25A42 Rabbit Polyclonal Antibody

Product data:

Product Type:	Primary Antibodies
Applications:	WB
Recommended Dilution:	WB
Reactivity:	Human
Host:	Rabbit
Isotype:	IgG
Clonality:	Polyclonal
Immunogen:	The immunogen for anti-SLC25A42 antibody: synthetic peptide directed towards the N terminal of human SLC25A42. Synthetic peptide located within the following region: GNGVKEGPVRLHEDAEAVLSSSVSSKRDHRQVLSSLLPGALAGALAKTAV
Formulation:	Liquid. Purified antibody supplied in 1x PBS buffer with 0.09% (w/v) sodium azide and 2% sucrose.
Purification:	Affinity Purified
Conjugation:	Unconjugated
Storage:	Store at -20°C as received.
Stability:	Stable for 12 months from date of receipt.
Predicted Protein Size:	35 kDa
Gene Name:	solute carrier family 25 member 42
Database Link:	NP_848621 Entrez Gene 284439 Human Q86VD7
Background:	SLC25A42 belongs to the SLC25 family of mitochondrial carrier proteins. The exact function of SLC25A42 remains unknown. SLC25A42 belongs to the SLC25 family of mitochondrial carrier proteins (Haitina et al., 2006 [PubMed 16949250]). [supplied by OMIM]. Sequence Note: removed 2 bases from the 5' end that did not align to the reference genome assembly. PRIMARYREFSEQ_SPAN PRIMARY_IDENTIFIER PRIMARY_SPAN COMP 1-3160 BC045598.1 3-3162
Synonyms:	MGC26694

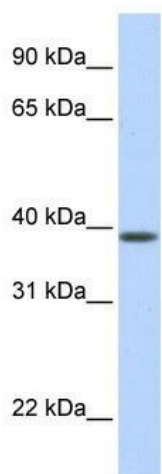


[View online »](#)

Note: Immunogen Sequence Homology: Rat: 100%; Human: 100%; Mouse: 100%; Pig: 93%; Bovine: 93%; Rabbit: 93%; Guinea pig: 93%; Dog: 92%

Protein Families: Druggable Genome

Product images:



WB Suggested Anti-SLC25A42 Antibody Titration:
0.2-1 ug/ml; ELISA Titer: 1: 1562500; Positive
Control: Human Muscle