

Product datasheet for TA334620

SLC9A9 Rabbit Polyclonal Antibody

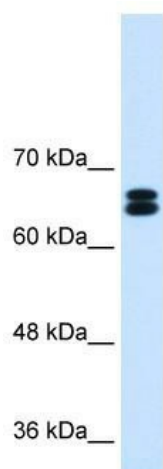
Product data:

Product Type:	Primary Antibodies
Applications:	IHC, WB
Recommended Dilution:	WB, IHC
Reactivity:	Human
Host:	Rabbit
Isotype:	IgG
Clonality:	Polyclonal
Immunogen:	The immunogen for anti-SLC9A9 antibody: synthetic peptide directed towards the C terminal of human SLC9A9. Synthetic peptide located within the following region: INYQEQASSPCSPPARLGLDQKASPQTPGKENIYEGDLGLGGYELKLEQT
Formulation:	Liquid. Purified antibody supplied in 1x PBS buffer with 0.09% (w/v) sodium azide and 2% sucrose. <i>Note that this product is shipped as lyophilized powder to China customers.</i>
Purification:	Affinity Purified
Conjugation:	Unconjugated
Storage:	Store at -20°C as received.
Stability:	Stable for 12 months from date of receipt.
Predicted Protein Size:	72 kDa
Gene Name:	solute carrier family 9 member A9
Database Link:	NP_775924 Entrez Gene 285195 Human Q8IVB4
Background:	SLC9A9 may act in electroneutral exchange of protons for Na(+) across membranes.
Synonyms:	AUTS16; NHE9
Note:	Immunogen Sequence Homology: Rat: 100%; Horse: 100%; Human: 100%; Mouse: 100%; Pig: 93%; Bovine: 93%; Rabbit: 93%; Guinea pig: 92%; Dog: 86%
Protein Families:	Druggable Genome, Transmembrane

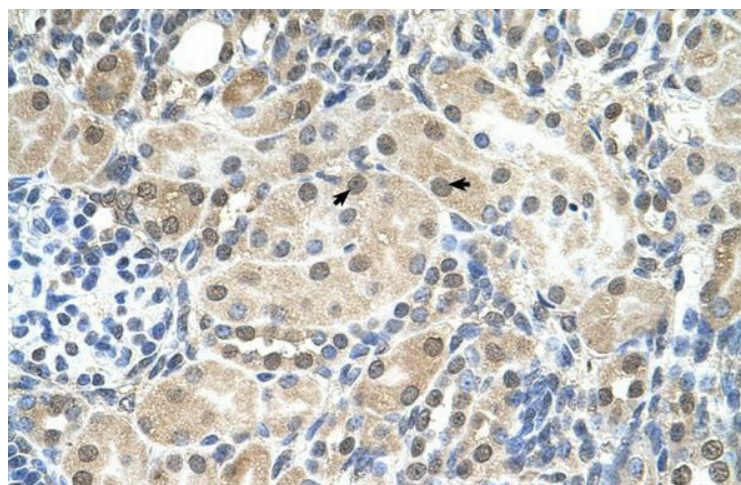


[View online »](#)

Product images:



WB Suggested Anti-SLC9A9 Antibody Titration:
0.25 ug/ml; Positive Control: HepG2 cell lysate



Human kidney