

## Product datasheet for TA334616

### SLC35F3 Rabbit Polyclonal Antibody

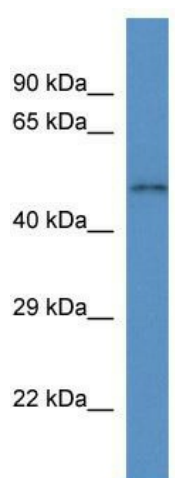
#### Product data:

Product Type:	Primary Antibodies
Applications:	WB
Recommended Dilution:	WB
Reactivity:	Mouse
Host:	Rabbit
Isotype:	IgG
Clonality:	Polyclonal
Immunogen:	The immunogen for anti-Slc35f3 antibody: synthetic peptide corresponding to a region of Mouse. Synthetic peptide located within the following region: IGLGFLLLLLPEEWDVWLKLLTRLKVRKKEETAESSGDLGTGPQRSRR
Formulation:	Liquid. Purified antibody supplied in 1x PBS buffer with 0.09% (w/v) sodium azide and 2% sucrose. <i>Note that this product is shipped as lyophilized powder to China customers.</i>
Purification:	Affinity Purified
Conjugation:	Unconjugated
Storage:	Store at -20°C as received.
Stability:	Stable for 12 months from date of receipt.
Predicted Protein Size:	47 kDa
Gene Name:	solute carrier family 35 member F3
Database Link:	<a href="#">NP_775779</a> <a href="#">Entrez Gene 148641 Human</a> <a href="#">Q8IY50</a>
Background:	Slc35f3 is a putative solute transporter Potential.
Synonyms:	FLJ37712
Note:	Immunogen Sequence Homology: Dog: 100%; Pig: 100%; Rat: 100%; Horse: 100%; Human: 100%; Mouse: 100%; Bovine: 100%; Rabbit: 100%; Guinea pig: 100%
Protein Families:	Transmembrane



[View online »](#)

## Product images:



WB Suggested Anti-Slc35f3 Antibody; Titration:  
1.0 ug/ml; Positive Control: Mouse Small Intestine