

## Product datasheet for **TA334615**

### SLC35F3 Rabbit Polyclonal Antibody

#### Product data:

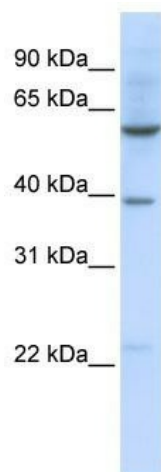
Product Type:	Primary Antibodies
Applications:	WB
Recommended Dilution:	WB
Reactivity:	Human
Host:	Rabbit
Isotype:	IgG
Clonality:	Polyclonal
Immunogen:	The immunogen for anti-SLC35F3 antibody: synthetic peptide directed towards the middle region of human SLC35F3. Synthetic peptide located within the following region: LKVFFTKAAPFGVLWTLTNYLYLHAIKKINTTDVSVLFCCNKAFVFLLSW
Formulation:	Liquid. Purified antibody supplied in 1x PBS buffer with 0.09% (w/v) sodium azide and 2% sucrose. <i>Note that this product is shipped as lyophilized powder to China customers.</i>
Purification:	Affinity Purified
Conjugation:	Unconjugated
Storage:	Store at -20°C as received.
Stability:	Stable for 12 months from date of receipt.
Predicted Protein Size:	55 kDa
Gene Name:	solute carrier family 35 member F3
Database Link:	<a href="#">NP_775779</a> <a href="#">Entrez Gene 148641 Human</a> <a href="#">Q8IY50</a>
Background:	SLC35F3 is a multi-pass membrane protein. Potential. It belongs to the SLC35F solute transporter family. SLC35F3 is a putative solute transporter.
Synonyms:	FLJ37712
Note:	Immunogen Sequence Homology: Pig: 100%; Rat: 100%; Horse: 100%; Human: 100%; Mouse: 100%; Bovine: 100%; Rabbit: 100%; Guinea pig: 100%; Dog: 93%; Zebrafish: 77%



[View online »](#)

Protein Families: Transmembrane

### Product images:



WB Suggested Anti-SLC35F3 Antibody Titration:  
0.2-1 ug/ml; ELISA Titer: 1: 62500; Positive  
Control: 721\_B cell lysate