

Product datasheet for **TA334614**

SLCO6A1 Rabbit Polyclonal Antibody

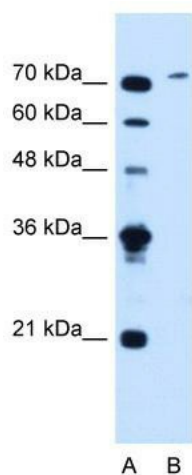
Product data:

Product Type:	Primary Antibodies
Applications:	WB
Recommended Dilution:	WB
Reactivity:	Human
Host:	Rabbit
Isotype:	IgG
Clonality:	Polyclonal
Immunogen:	The immunogen for anti-SLCO6A1 antibody: synthetic peptide directed towards the C terminal of human SLCO6A1. Synthetic peptide located within the following region: LAMTRVVPDKLRSLALGVSYVILRIFGTIPGPSIFKMSGETSCILRDVNK
Formulation:	Liquid. Purified antibody supplied in 1x PBS buffer with 0.09% (w/v) sodium azide and 2% sucrose.
Purification:	Protein A purified
Conjugation:	Unconjugated
Storage:	Store at -20°C as received.
Stability:	Stable for 12 months from date of receipt.
Predicted Protein Size:	79 kDa
Gene Name:	solute carrier organic anion transporter family member 6A1
Database Link:	NP_775759 Entrez Gene 133482 Human Q86UG4
Background:	The function remains unknown.
Synonyms:	CT48; GST; OATP-I; OATP6A1; OATPY
Note:	Immunogen Sequence Homology: Human: 100%; Rabbit: 92%; Pig: 79%
Protein Families:	Transmembrane



[View online »](#)

Product images:



WB Suggested Anti-SLCO6A1 Antibody Titration:
1.25 ug/ml; Positive Control: Jurkat cell lysate