

Product datasheet for **TA334601**

SLC15A4 Rabbit Polyclonal Antibody

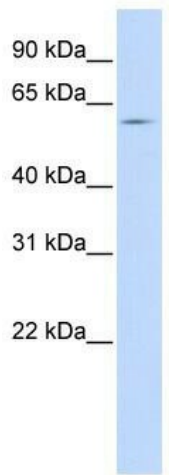
Product data:

Product Type:	Primary Antibodies
Applications:	WB
Recommended Dilution:	WB
Reactivity:	Human
Host:	Rabbit
Isotype:	IgG
Clonality:	Polyclonal
Immunogen:	The immunogen for anti-SLC15A4 antibody: synthetic peptide directed towards the middle region of human SLC15A4. Synthetic peptide located within the following region: GLLPSSLKRIAVGMFFVMCSAFAAGILESKRLNLVKEKTINQ TIGNVYH
Formulation:	Liquid. Purified antibody supplied in 1x PBS buffer with 0.09% (w/v) sodium azide and 2% sucrose. <i>Note that this product is shipped as lyophilized powder to China customers.</i>
Purification:	Affinity Purified
Conjugation:	Unconjugated
Storage:	Store at -20°C as received.
Stability:	Stable for 12 months from date of receipt.
Predicted Protein Size:	62 kDa
Gene Name:	solute carrier family 15 member 4
Database Link:	NP_663623 Entrez Gene 121260 Human Q8N697
Background:	SLC15A4 is the proton oligopeptide cotransporter. It transports free histidine and certain di- and tripeptides.
Synonyms:	FP12591; PHT1; PTR4
Note:	Immunogen Sequence Homology: Human: 100%; Dog: 93%; Pig: 93%; Rat: 93%; Horse: 93%; Mouse: 93%; Bovine: 93%; Rabbit: 93%; Guinea pig: 93%

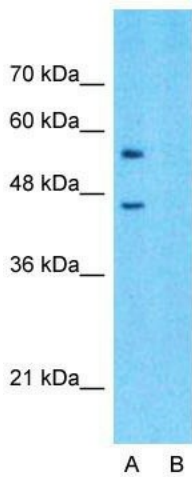


[View online »](#)

Product images:



WB Suggested Anti-SLC15A4 Antibody Titration:
0.2-1 ug/ml; ELISA Titer: 1: 1562500; Positive
Control: 293T cell lysate



Anti-SLC15A4 Western Blot & Peptide Block Validation

Lysate: 293T Cell

Lane A: Primary Antibody
Lane B: Primary Antibody + Blocking Peptide

Primary Antibody Concentration: 1.0µg/ml
Peptide Concentration: 5.0µg/ml
Lysate Quantity: 25µg/lane
Gel Concentration: 12%

Host: Rabbit; Target Name: SLC15A4; Sample
Tissue: 293T; Lane A: Primary Antibody; Lane B:
Primary Antibody + Blocking Peptide; Primary
Antibody Concentration: 1 ug/ml; Peptide
Concentration: 5 ug/ml; Lysate Quantity: 25
ug/lane/lane; Gel Concentration: 0