

Product datasheet for **TA334591**

HCP1 (SLC46A1) Rabbit Polyclonal Antibody

Product data:

Product Type:	Primary Antibodies
Applications:	WB
Recommended Dilution:	WB
Reactivity:	Human
Host:	Rabbit
Isotype:	IgG
Clonality:	Polyclonal
Immunogen:	The immunogen for anti-SLC46A1 antibody: synthetic peptide directed towards the N terminal of human SLC46A1. Synthetic peptide located within the following region: MEGSASPPEKPRARPAAAVLCRGPVEPLVFLANFALVLQGPLTTQYLWHR
Formulation:	Liquid. Purified antibody supplied in 1x PBS buffer with 0.09% (w/v) sodium azide and 2% sucrose. <i>Note that this product is shipped as lyophilized powder to China customers.</i>
Purification:	Affinity Purified
Conjugation:	Unconjugated
Storage:	Store at -20°C as received.
Stability:	Stable for 12 months from date of receipt.
Predicted Protein Size:	50 kDa
Gene Name:	solute carrier family 46 member 1
Database Link:	NP_542400 Entrez Gene 113235 Human Q96NT5



[View online »](#)

Background:

This gene encodes a transmembrane proton-coupled folate transporter protein that facilitates the movement of folate and antifolate substrates across cell membranes, optimally in acidic pH environments. This protein is also expressed in the brain and choroid plexus where it transports folates into the central nervous system. This protein further functions as a heme transporter in duodenal enterocytes, and potentially in other tissues like liver and kidney. Its localization to the apical membrane or cytoplasm of intestinal cells is modulated by dietary iron levels. Mutations in this gene are associated with autosomal recessive hereditary folate malabsorption disease. Alternatively spliced transcript variants encoding different isoforms have been described for this gene. [provided by RefSeq, Aug 2013]

Synonyms:

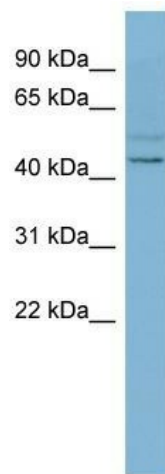
G21; HCP1; PCFT

Note:

Immunogen Sequence Homology: Dog: 100%; Pig: 100%; Rat: 100%; Horse: 100%; Human: 100%; Mouse: 100%; Rabbit: 100%; Guinea pig: 100%; Bovine: 93%

Protein Families:

Transmembrane

Product images:

WB Suggested Anti-SLC46A1 Antibody Titration:
0.2-1 ug/ml; ELISA Titer: 1: 2500; Positive Control:
OVCAR-3 cell lysate