

Product datasheet for **TA334565**

SAPS1 (PPP6R1) Rabbit Polyclonal Antibody

Product data:

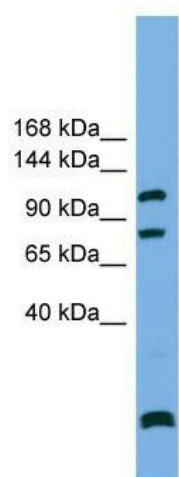
Product Type:	Primary Antibodies
Applications:	WB
Recommended Dilution:	WB
Reactivity:	Human
Host:	Rabbit
Isotype:	IgG
Clonality:	Polyclonal
Immunogen:	The immunogen for anti-PPP6R1 antibody: synthetic peptide directed towards the N terminal of human PPP6R1. Synthetic peptide located within the following region: MFWKFDLHTSSHLDTLEREDLSLPELLDEEDVLQECKVNRKLLDFLLQ
Formulation:	Liquid. Purified antibody supplied in 1x PBS buffer with 0.09% (w/v) sodium azide and 2% sucrose. <i>Note that this product is shipped as lyophilized powder to China customers.</i>
Purification:	Affinity Purified
Conjugation:	Unconjugated
Storage:	Store at -20°C as received.
Stability:	Stable for 12 months from date of receipt.
Predicted Protein Size:	97 kDa
Gene Name:	protein phosphatase 6 regulatory subunit 1
Database Link:	NP_055746 Entrez Gene 22870 Human Q9UPN7
Background:	Protein phosphatase regulatory subunits, such as SAPS1, modulate the activity of protein phosphatase catalytic subunits by restricting substrate specificity, recruiting substrates, and determining the intracellular localization of the holoenzyme. SAPS1 is a regulatory subunit for the protein phosphatase-6 catalytic subunit (PPP6C; MIM 300141) (Stefansson and Brautigan, 2006 [PubMed 16769727]).
Synonyms:	KIAA1115; PP6R1; SAP190; SAPS1



[View online »](#)

Note: Immunogen Sequence Homology: Pig: 100%; Rat: 100%; Horse: 100%; Human: 100%; Bovine: 100%; Rabbit: 100%; Guinea pig: 100%; Dog: 93%; Mouse: 93%

Product images:



WB Suggested Anti-PPP6R1 Antibody Titration: 0.2-1 ug/ml; Positive Control: RPMI 8226 cell lysate PPP6R1 is supported by BioGPS gene expression data to be expressed in RPMI 8226