

## Product datasheet for **TA334564**

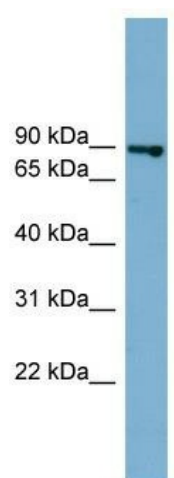
### FASTKD2 Rabbit Polyclonal Antibody

#### Product data:

Product Type:	Primary Antibodies
Applications:	WB
Recommended Dilution:	WB
Reactivity:	Human
Host:	Rabbit
Isotype:	IgG
Clonality:	Polyclonal
Immunogen:	The immunogen for anti-FASTKD2 antibody: synthetic peptide directed towards the middle region of human FASTKD2. Synthetic peptide located within the following region: DTNRNQVLPLSDVDTTSATDIQRVAVLCVSR SAYCLGSSHPRGFLAMKMR
Formulation:	Liquid. Purified antibody supplied in 1x PBS buffer with 0.09% (w/v) sodium azide and 2% sucrose. <i>Note that this product is shipped as lyophilized powder to China customers.</i>
Purification:	Affinity Purified
Conjugation:	Unconjugated
Storage:	Store at -20°C as received.
Stability:	Stable for 12 months from date of receipt.
Predicted Protein Size:	81 kDa
Gene Name:	FAST kinase domains 2
Database Link:	<a href="#">NP_055744</a> <a href="#">Entrez Gene 22868 Human</a> <a href="#">Q9NYY8</a>
Background:	This gene encodes a protein that is localized in the mitochondrial inner compartment and that may play a role in mitochondrial apoptosis. Nonsense mutations have been reported to result in cytochrome c oxidase deficiency.
Synonyms:	KIAA0971
Note:	Immunogen Sequence Homology: Human: 100%; Horse: 87%



[View online »](#)

**Product images:**

WB Suggested Anti-FASTKD2 Antibody Titration:  
0.2-1 ug/ml; Positive Control: 721\_B cell  
lysateFASTKD2 is strongly supported by BioGPS  
gene expression data to be expressed in Human  
721\_B cells