

## Product datasheet for **TA334562**

### CPEB3 Rabbit Polyclonal Antibody

#### Product data:

|                         |  |
|-------------------------|--|
| Product Type:           | Primary Antibodies   |
| Applications:           | WB   |
| Recommended Dilution:   | WB   |
| Reactivity:             | Human  |
| Host:                   | Rabbit   |
| Isotype:                | IgG  |
| Clonality:              | Polyclonal   |
| Immunogen:              | The immunogen for anti-CPEB3 antibody: synthetic peptide directed towards the middle region of human CPEB3. Synthetic peptide located within the following region: RTDNGNLLPFQDRSRPYDTFNLHSLNSLMDMIRTDHEPLKKGKHYPSPG |
| Formulation:            | Liquid. Purified antibody supplied in 1x PBS buffer with 0.09% (w/v) sodium azide and 2% sucrose.<br><i>Note that this product is shipped as lyophilized powder to China customers.</i>                              |
| Purification:           | Affinity Purified  |
| Conjugation:            | Unconjugated   |
| Storage:                | Store at -20°C as received.  |
| Stability:              | Stable for 12 months from date of receipt.   |
| Predicted Protein Size: | 76 kDa   |
| Gene Name:              | cytoplasmic polyadenylation element binding protein 3  |
| Database Link:          | <a href="#">NP_055727</a><br><a href="#">Entrez Gene 22849 Human</a><br><a href="#">Q8NE35</a>   |
| Background:             | The exact function of CPEB3 remains unknown.   |
| Synonyms:               | cytoplasmic polyadenylation element binding protein 3; OTTHUMP00000059577  |
| Note:                   | Immunogen Sequence Homology: Dog: 100%; Pig: 100%; Rat: 100%; Horse: 100%; Human: 100%; Mouse: 100%; Bovine: 100%; Rabbit: 100%  |

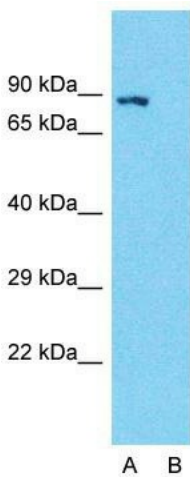


[View online »](#)

**Product images:**



WB Suggested Anti-CPEB3 Antibody Titration: 0.2-1 ug/ml; ELISA Titer: 1: 312500; Positive Control: 721\_B cell lysate



**Anti-CPEB3 Western Blot & Peptide Block Validation**

Lysate: 721\_B cell

Lane A: Primary Antibody  
Lane B: Primary Antibody + Blocking Peptide

Primary Antibody Concentration: 1.0µg/ml  
Peptide Concentration: 5.0µg/ml  
Lysate Quantity: 25µg/lane  
Gel Concentration: 12%

Host: Rabbit; Target Name: CPEB3; Sample Tissue: 721\_B Whole Cell; Lane A: Primary Antibody; Lane B: Primary Antibody + Blocking Peptide; Primary Antibody Concentration: 1 ug/ml; Peptide Concentration: 5 ug/ml; Lysate Quantity: 25 ug/lane; Gel Concentrati