

Product datasheet for **TA334561**

AAK1 Rabbit Polyclonal Antibody

Product data:

Product Type:	Primary Antibodies
Applications:	WB
Recommended Dilution:	WB
Reactivity:	Human
Host:	Rabbit
Isotype:	IgG
Clonality:	Polyclonal
Immunogen:	The immunogen for anti-AAK1 antibody: synthetic peptide directed towards the C terminal of human AAK1. Synthetic peptide located within the following region: SGFDVPEGSDKVAEDEFDPIPVLITKNPQGGHSRNSSGSESSLPNLARS
Formulation:	Liquid. Purified antibody supplied in 1x PBS buffer with 0.09% (w/v) sodium azide and 2% sucrose. <i>Note that this product is shipped as lyophilized powder to China customers.</i>
Purification:	Affinity Purified
Conjugation:	Unconjugated
Storage:	Store at -20°C as received.
Stability:	Stable for 12 months from date of receipt.
Predicted Protein Size:	104 kDa
Gene Name:	AP2 associated kinase 1
Database Link:	NP_055726 Entrez Gene 22848 Human Q2M2I8



[View online »](#)

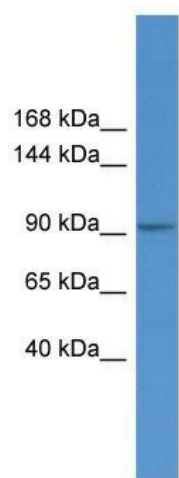
Background: Adaptor-related protein complex 2 (AP-2 complexes) functions during receptor-mediated endocytosis to trigger clathrin assembly, interact with membrane-bound receptors, and recruit endocytic accessory factors. This gene encodes a member of the SNF1 subfamily of Ser/Thr protein kinases. The protein interacts with and phosphorylates a subunit of the AP-2 complex, which promotes binding of AP-2 to sorting signals found in membrane-bound receptors and subsequent receptor endocytosis. Its kinase activity is stimulated by clathrin. Alternatively spliced transcript variants have been described, but their biological validity has not been determined.

Synonyms: RP11-427H3.3

Note: Immunogen Sequence Homology: Dog: 100%; Pig: 100%; Rat: 100%; Human: 100%; Mouse: 100%; Bovine: 100%; Rabbit: 100%

Protein Families: Druggable Genome, Protein Kinase

Product images:



WB Suggested Anti-AAK1 Antibody Titration: 0.2-1 ug/ml; ELISA Titer: 1: 62500; Positive Control: 721_B cell lysate There is BioGPS gene expression data showing that AAK1 is expressed in 721_B