

Product datasheet for **TA334559**

VASH1 Rabbit Polyclonal Antibody

Product data:

Product Type:	Primary Antibodies
Applications:	WB
Recommended Dilution:	WB
Reactivity:	Human
Host:	Rabbit
Isotype:	IgG
Clonality:	Polyclonal
Immunogen:	The immunogen for anti-VASH1 antibody: synthetic peptide directed towards the N terminal of human VASH1. Synthetic peptide located within the following region: ATWERMWKHVAKIHPDGEKVAQRIRGATDLPKIPIPSVPTFQPSTPVPER
Formulation:	Liquid. Purified antibody supplied in 1x PBS buffer with 0.09% (w/v) sodium azide and 2% sucrose. <i>Note that this product is shipped as lyophilized powder to China customers.</i>
Purification:	Affinity Purified
Conjugation:	Unconjugated
Storage:	Store at -20°C as received.
Stability:	Stable for 12 months from date of receipt.
Predicted Protein Size:	41 kDa
Gene Name:	vasohibin 1
Database Link:	NP_055724 Entrez Gene 22846 Human Q7L8A9



[View online »](#)

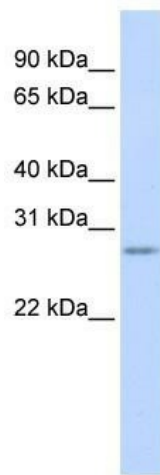
Background: VASH1 is the angiogenesis inhibitor. It inhibits migration, proliferation and network formation by endothelial cells as well as angiogenesis. This inhibitory effect is selective to endothelial cells as it does not affect the migration of smooth muscle cells or fibroblasts. VASH1 does not affect the proliferation of cancer cells in vitro, but inhibits tumor growth and tumor angiogenesis. It acts in an autocrine manner. VASH1 inhibits artery neointimal formation and macrophage infiltration. Western blots using two different antibodies against two unique regions of this protein target confirm the same apparent molecular weight in our tests.

Synonyms: KIAA1036

Note: Immunogen Sequence Homology: Dog: 100%; Pig: 100%; Rat: 100%; Human: 100%; Mouse: 100%; Bovine: 100%; Guinea pig: 100%; Horse: 93%; Rabbit: 93%; Zebrafish: 79%

Protein Families: Secreted Protein

Product images:



WB Suggested Anti-VASH1 Antibody Titration: 0.2-1 ug/ml; ELISA Titer: 1: 312500; Positive Control: 721_B cell lysate