

Product datasheet for **TA334557**

RAB11 FIP2 (RAB11FIP2) Rabbit Polyclonal Antibody

Product data:

Product Type:	Primary Antibodies
Applications:	WB
Recommended Dilution:	WB
Reactivity:	Human
Host:	Rabbit
Isotype:	IgG
Clonality:	Polyclonal
Immunogen:	The immunogen for anti-RAB11FIP2 antibody: synthetic peptide directed towards the N terminal of human RAB11FIP2. Synthetic peptide located within the following region: LLIQGSPEKYILFLIVMHRSLVGLDKFLGQVAINLNDIFEDKQRRKTEWF
Formulation:	Liquid. Purified antibody supplied in 1x PBS buffer with 0.09% (w/v) sodium azide and 2% sucrose. <i>Note that this product is shipped as lyophilized powder to China customers.</i>
Purification:	Affinity Purified
Conjugation:	Unconjugated
Storage:	Store at -20°C as received.
Stability:	Stable for 12 months from date of receipt.
Predicted Protein Size:	58 kDa
Gene Name:	RAB11 family interacting protein 2
Database Link:	NP_055719 Entrez Gene 22841 Human Q7L804
Background:	RAB11FIP2 is a Rab11 effector protein acting in the regulation of the transport of vesicles from the endosomal recycling compartment (ERC) to the plasma membrane. RAB11FIP2 is also involved in receptor-mediated endocytosis and membrane trafficking of recycling endosomes, probably originating from clathrin-coated vesicles. Binds preferentially to phosphatidylinositol 3,4,5-trisphosphate (PtdInsP3) and phosphatidic acid (PA).
Synonyms:	nRip11; Rab11-FIP2

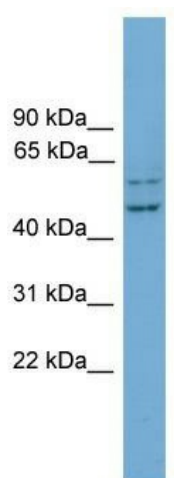


[View online »](#)

Note: Immunogen Sequence Homology: Dog: 100%; Pig: 100%; Rat: 100%; Horse: 100%; Human: 100%; Mouse: 100%; Bovine: 100%; Rabbit: 100%; Guinea pig: 93%

Protein Pathways: Endocytosis

Product images:



WB Suggested Anti-RAB11FIP2 Antibody Titration:
0.2-1 ug/ml; Positive Control: COLO205 cell lysate