

## Product datasheet for **TA334555**

### FAM120A Rabbit Polyclonal Antibody

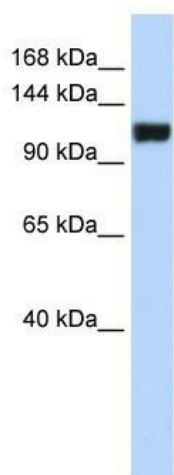
#### Product data:

Product Type:	Primary Antibodies
Applications:	WB
Recommended Dilution:	WB
Reactivity:	Human
Host:	Rabbit
Isotype:	IgG
Clonality:	Polyclonal
Immunogen:	The immunogen for anti-FAM120A antibody: synthetic peptide directed towards the middle region of human FAM120A. Synthetic peptide located within the following region: SGGATNHISGNKIGWEKTGSHSEPQARGDPGDQTKAEGSSTASSGSQLAE
Formulation:	Liquid. Purified antibody supplied in 1x PBS buffer with 0.09% (w/v) sodium azide and 2% sucrose.
Purification:	Affinity Purified
Conjugation:	Unconjugated
Storage:	Store at -20°C as received.
Stability:	Stable for 12 months from date of receipt.
Predicted Protein Size:	122 kDa
Gene Name:	family with sequence similarity 120A
Database Link:	<a href="#">NP_055427</a> <a href="#">Entrez Gene 23196 Human</a> <a href="#">Q9NZB2</a>
Background:	FAM120A may participate in mRNA transport in the cytoplasm. FAM120A is the critical component of the oxidative stress-induced survival signaling. It activates src family kinases and acts as a scaffolding protein enabling src family kinases to phosphorylate and activate PI3-kinase. FAM120A binds RNA and promotes the secretion of IGF-II. It may play a pivotal role in the progression of scirrhou-type gastric cancer by supporting cancer cell survival in environments with various oxidative stresses.
Synonyms:	C9orf10; OSSA


[View online »](#)

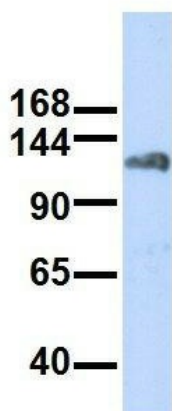
**Note:** Immunogen Sequence Homology: Dog: 100%; Pig: 100%; Horse: 100%; Human: 100%; Bovine: 100%; Rabbit: 92%; Rat: 85%; Mouse: 85%

## Product images:



WB Suggested Anti-FAM120A Antibody Titration: 0.2-1 ug/ml; ELISA Titer: 1: 312500; Positive Control: MCF7 cell lysate. FAM120A is strongly supported by BioGPS gene expression data to be expressed in MCF7

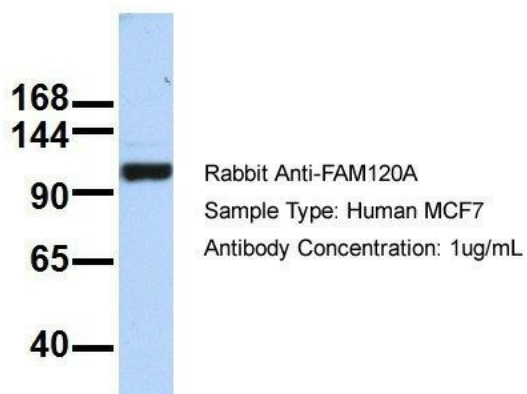
## FAM120A



Rabbit Anti-FAM120A  
Sample Type: Human 293T  
Antibody Concentration: 1ug/mL

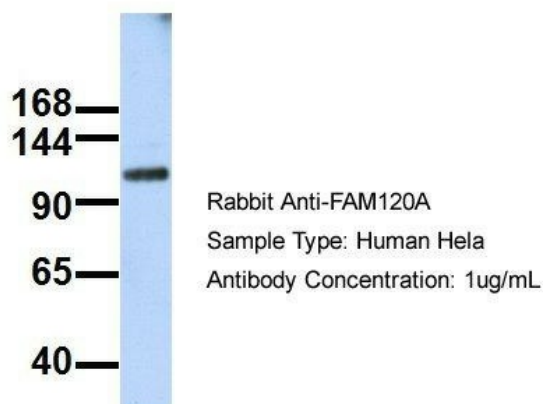
Host: Rabbit; Target Name: FAM120A; Sample Tissue: 293T; Antibody Dilution: 1.0 ug/ml

## FAM120A



Host: Rabbit; Target Name: FAM120A; Sample Tissue: MCF7; Antibody Dilution: 1.0 ug/ml; FAM120A is strongly supported by BioGPS gene expression data to be expressed in MCF7

## FAM120A



Host: Rabbit; Target Name: FAM120A; Sample Tissue: HeLa; Antibody Dilution: 1.0 ug/ml; FAM120A is strongly supported by BioGPS gene expression data to be expressed in Human HeLa cells