

Product datasheet for **TA334550**

Tropomodulin 2 (TMOD2) Rabbit Polyclonal Antibody

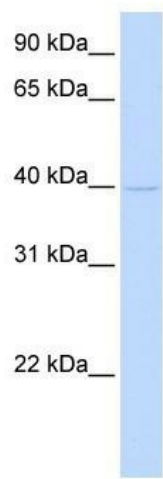
Product data:

Product Type:	Primary Antibodies
Applications:	WB
Recommended Dilution:	WB
Reactivity:	Human
Host:	Rabbit
Isotype:	IgG
Clonality:	Polyclonal
Immunogen:	The immunogen for anti-TMOD2 antibody: synthetic peptide directed towards the N terminal of human TMOD2. Synthetic peptide located within the following region: LDDLDPESAMLPAQFRQKDQTQKAATGPFDRHLLMYLEKEALEQKDRED
Formulation:	Liquid. Purified antibody supplied in 1x PBS buffer with 0.09% (w/v) sodium azide and 2% sucrose. <i>Note that this product is shipped as lyophilized powder to China customers.</i>
Purification:	Affinity Purified
Conjugation:	Unconjugated
Storage:	Store at -20°C as received.
Stability:	Stable for 12 months from date of receipt.
Predicted Protein Size:	39 kDa
Gene Name:	tropomodulin 2
Database Link:	NP_055363 Entrez Gene 29767 Human Q9NZR1
Background:	TMOD2 is a neuronal-specific member of the tropomodulin family of actin-regulatory proteins. It caps the pointed end of actin filaments preventing both elongation and depolymerization. The capping activity of this protein is dependent on its association with tropomyosin.
Synonyms:	N-TMOD; NTMOD



[View online »](#)

Note: Immunogen Sequence Homology: Dog: 100%; Pig: 100%; Rat: 100%; Horse: 100%; Human: 100%; Mouse: 100%; Bovine: 100%; Rabbit: 100%; Guinea pig: 100%; Zebrafish: 77%

Product images:

WB Suggested Anti-TMOD2 Antibody Titration:
0.2-1 ug/ml; ELISA Titer: 1: 1562500; Positive
Control: Hela cell lysate