

Product datasheet for **TA334549**

Tropomodulin 3 (TMOD3) Rabbit Polyclonal Antibody

Product data:

Product Type:	Primary Antibodies
Applications:	WB
Recommended Dilution:	WB
Reactivity:	Human
Host:	Rabbit
Isotype:	IgG
Clonality:	Polyclonal
Immunogen:	The immunogen for anti-TMOD3 antibody: synthetic peptide directed towards the middle region of human TMOD3. Synthetic peptide located within the following region: ITNTKFCNIMGSSNGVDQEHFSNVVKGEKILPVFDEPPNPTNVEESLKRT
Formulation:	Liquid. Purified antibody supplied in 1x PBS buffer with 0.09% (w/v) sodium azide and 2% sucrose. <i>Note that this product is shipped as lyophilized powder to China customers.</i>
Purification:	Affinity Purified
Conjugation:	Unconjugated
Storage:	Store at -20°C as received.
Stability:	Stable for 12 months from date of receipt.
Predicted Protein Size:	39 kDa
Gene Name:	tropomodulin 3
Database Link:	NP_055362 Entrez Gene 29766 Human Q9NYL9
Background:	TMOD3 belongs to the tropomodulin family. It blocks the elongation and depolymerization of the actin filaments at the pointed end. The Tmod/TM complex contributes to the formation of the short actin protofilament, which in turn defines the geometry of the membrane skeleton. This gene is a necessary element in receptor tyrosine kinase pathways, possibly as a tyrosine phosphorylation target. It is involved in regulation of RAF in the MAPK pathway and may also play a role in a MAPK-independent pathway.

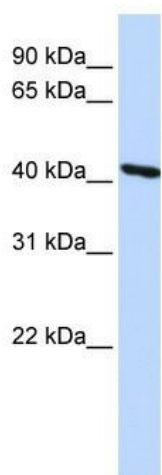


[View online »](#)

Synonyms: UTMOD

Note: Immunogen Sequence Homology: Dog: 100%; Rat: 100%; Human: 100%; Mouse: 100%; Bovine: 100%; Rabbit: 100%; Pig: 93%; Horse: 93%; Guinea pig: 93%; Zebrafish: 86%

Product images:



WB Suggested Anti-TMOD3 Antibody Titration:
0.2-1 ug/ml; ELISA Titer: 1: 62500; Positive
Control: HepG2 cell lysate