

Product datasheet for **TA334547**

SH3BP4 Rabbit Polyclonal Antibody

Product data:

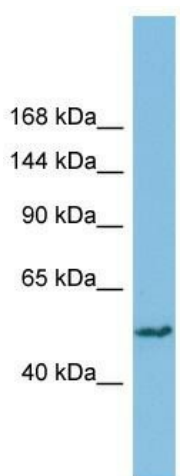
Product Type:	Primary Antibodies
Applications:	WB
Recommended Dilution:	WB
Reactivity:	Human
Host:	Rabbit
Isotype:	IgG
Clonality:	Polyclonal
Immunogen:	The immunogen for anti-SH3BP4 antibody is: synthetic peptide directed towards the N-terminal region of Human SH3BP4. Synthetic peptide located within the following region: PSSYVQPLNYRNSTLSDSGMIDNLPDSPDEVAKELELLGGWTDDKKVPGR
Formulation:	Liquid. Purified antibody supplied in 1x PBS buffer with 0.09% (w/v) sodium azide and 2% sucrose.
Purification:	Affinity Purified
Conjugation:	Unconjugated
Storage:	Store at -20°C as received.
Stability:	Stable for 12 months from date of receipt.
Predicted Protein Size:	60 kDa
Gene Name:	SH3 domain binding protein 4
Database Link:	NP_055336 Entrez Gene 23677 Human Q9P0V3
Background:	This gene encodes a protein with 3 Asn-Pro-Phe (NPF) motifs, an SH3 domain, a PXXP motif, a bipartite nuclear targeting signal, and a tyrosine phosphorylation site. This protein is involved in cargo-specific control of clathrin-mediated endocytosis, specifically controlling the internalization of a specific protein receptor.
Synonyms:	BOG25; TTP
Note:	Immunogen Sequence Homology: Dog: 100%; Pig: 100%; Rat: 100%; Horse: 100%; Human: 100%; Mouse: 100%; Bovine: 100%; Guinea pig: 100%; Rabbit: 93%; Zebrafish: 85%



[View online »](#)

Protein Families: Druggable Genome

Product images:



Host: Rabbit
Target Name: SH3BP4
Sample Tissue: THP-1 Cell Lysate
Antibody Dilution: 1.0 μ g/ml

Host: Rabbit; Target Name: SH3BP4; Sample Tissue: THP-1 Whole Cell lysates; Antibody Dilution: 1.0 ug/ml