

Product datasheet for **TA334544**

ADAMDEC1 Rabbit Polyclonal Antibody

Product data:

Product Type:	Primary Antibodies
Applications:	WB
Recommended Dilution:	WB
Reactivity:	Human
Host:	Rabbit
Isotype:	IgG
Clonality:	Polyclonal
Immunogen:	The immunogen for anti-ADAMDEC1 antibody: synthetic peptide directed towards the middle region of human ADAMDEC1. Synthetic peptide located within the following region: GMPDVPFNTKCPGSGSCVMNQYLSSKFKDFSTSCRAHFERYLLSQPKCL
Formulation:	Liquid. Purified antibody supplied in 1x PBS buffer with 0.09% (w/v) sodium azide and 2% sucrose. <i>Note that this product is shipped as lyophilized powder to China customers.</i>
Purification:	Affinity Purified
Conjugation:	Unconjugated
Storage:	Store at -20°C as received.
Stability:	Stable for 12 months from date of receipt.
Predicted Protein Size:	53 kDa
Gene Name:	ADAM like decysin 1
Database Link:	NP_055294 Entrez Gene 27299 Human O15204
Background:	This encoded protein is thought to be a secreted protein belonging to the disintegrin metalloproteinase family. Its expression is upregulated during dendritic cells maturation. This protein may play an important role in dendritic cell function and their interactions with germinal center T cells. [provided by RefSeq, Jul 2008]
Synonyms:	M12.219

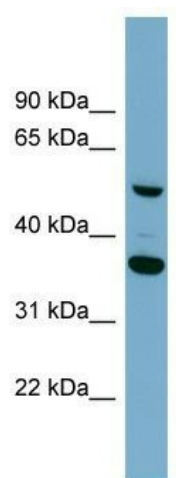


[View online »](#)

Note: Immunogen Sequence Homology: Dog: 100%; Pig: 100%; Rat: 100%; Human: 100%; Mouse: 100%; Rabbit: 100%; Horse: 93%; Bovine: 93%

Protein Families: Druggable Genome, Secreted Protein

Product images:



WB Suggested Anti-ADAMDEC1 Antibody
Titration: 0.2-1 ug/ml; Positive Control: ACHN cell
lysate