

Product datasheet for **TA334543**

ALP (PDLIM3) Rabbit Polyclonal Antibody

Product data:

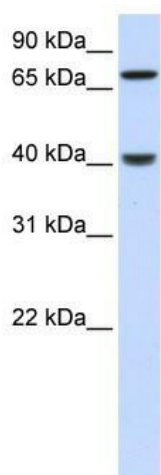
Product Type:	Primary Antibodies
Applications:	WB
Recommended Dilution:	WB
Reactivity:	Human
Host:	Rabbit
Isotype:	IgG
Clonality:	Polyclonal
Immunogen:	The immunogen for anti-PDLIM3 antibody: synthetic peptide directed towards the N terminal of human PDLIM3. Synthetic peptide located within the following region: PQTVILPGPAPWGFRLSGGIDFNQPLVITRITPGSKAAAANLCPGDVILA
Formulation:	Liquid. Purified antibody supplied in 1x PBS buffer with 0.09% (w/v) sodium azide and 2% sucrose. <i>Note that this product is shipped as lyophilized powder to China customers.</i>
Purification:	Affinity Purified
Conjugation:	Unconjugated
Storage:	Store at -20°C as received.
Stability:	Stable for 12 months from date of receipt.
Predicted Protein Size:	39 kDa
Gene Name:	PDZ and LIM domain 3
Database Link:	NP_055291 Entrez Gene 27295 Human Q53GG5
Background:	PDLIM3 contains a PDZ domain and a LIM domain, indicating that it may be involved in cytoskeletal assembly. In support of this, PDLIM3 has been shown to bind the spectrin-like repeats of alpha-actinin-2 and to colocalize with alpha-actinin-2 at the Z lines of skeletal muscle.
Synonyms:	ALP



[View online »](#)

Note: Immunogen Sequence Homology: Dog: 100%; Pig: 100%; Rat: 100%; Goat: 100%; Horse: 100%; Human: 100%; Mouse: 100%; Bovine: 100%; Guinea pig: 100%; Rabbit: 93%; Zebrafish: 86%

Product images:



WB Suggested Anti-PDLIM3 Antibody Titration:
0.2-1 ug/ml; ELISA Titer: 1: 1562500; Positive
Control: Human Liver