

Product datasheet for **TA334540**

TINAG Rabbit Polyclonal Antibody

Product data:

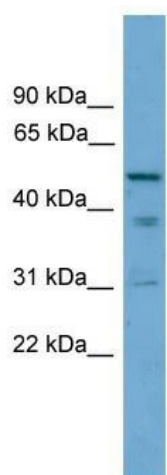
Product Type:	Primary Antibodies
Applications:	WB
Recommended Dilution:	WB
Reactivity:	Human
Host:	Rabbit
Isotype:	IgG
Clonality:	Polyclonal
Immunogen:	The immunogen for anti-TINAG antibody: synthetic peptide directed towards the middle region of human TINAG. Synthetic peptide located within the following region: VAADRIAQSKGRYTANLSPQNLISCCAKNRHGCSGSDRAWWYLRKRG
Formulation:	Liquid. Purified antibody supplied in 1x PBS buffer with 0.09% (w/v) sodium azide and 2% sucrose. <i>Note that this product is shipped as lyophilized powder to China customers.</i>
Purification:	Affinity Purified
Conjugation:	Unconjugated
Storage:	Store at -20°C as received.
Stability:	Stable for 12 months from date of receipt.
Predicted Protein Size:	54 kDa
Gene Name:	tubulointerstitial nephritis antigen
Database Link:	NP_055279 Entrez Gene 27283 Human Q9UJW2
Background:	TINAG is a basement membrane glycoprotein initially identified as a target of antibodies in some forms of immunologically mediated tubulointerstitial nephritis.
Synonyms:	TIN-AG
Note:	Immunogen Sequence Homology: Rat: 100%; Human: 100%; Mouse: 100%; Dog: 93%; Pig: 93%; Bovine: 93%; Rabbit: 93%; Guinea pig: 93%; Horse: 86%



[View online »](#)

Protein Families: Druggable Genome, Protease, Secreted Protein

Product images:



WB Suggested Anti-TINAG Antibody Titration: 0.2-1 ug/ml; Positive Control: PANC1 cell lysate