

## Product datasheet for **TA334539**

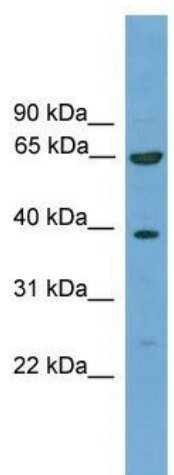
### KLHL20 Rabbit Polyclonal Antibody

#### Product data:

Product Type:	Primary Antibodies
Applications:	WB
Recommended Dilution:	WB
Reactivity:	Human
Host:	Rabbit
Isotype:	IgG
Clonality:	Polyclonal
Immunogen:	The immunogen for anti-KLHL20 antibody: synthetic peptide directed towards the C terminal of human KLHL20. Synthetic peptide located within the following region: NPQENRWHTIAPMGTRRKHLGCAVYQDMIYAVGGRDDTTELSSAERYNPR
Formulation:	Liquid. Purified antibody supplied in 1x PBS buffer with 0.09% (w/v) sodium azide and 2% sucrose.
Purification:	Affinity Purified
Conjugation:	Unconjugated
Storage:	Store at -20°C as received.
Stability:	Stable for 12 months from date of receipt.
Predicted Protein Size:	68 kDa
Gene Name:	kelch like family member 20
Database Link:	<a href="#">NP_055273</a> <a href="#">Entrez Gene 27252 Human</a> <a href="#">Q9Y2M5</a>
Background:	The protein encoded by this gene is a member of the kelch family of proteins, which is characterized by a 44-56 amino acid repeat motif. The kelch motif appears in many different polypeptide contexts and contains multiple potential protein-protein contact sites. Members of this family are present both throughout the cell and extracellularly, with diverse activities.
Synonyms:	KHLHX; KLEIP; KLHLX
Note:	Immunogen Sequence Homology: Dog: 100%; Pig: 100%; Rat: 100%; Horse: 100%; Human: 100%; Mouse: 100%; Bovine: 100%; Rabbit: 100%; Zebrafish: 100%; Guinea pig: 100%



[View online »](#)

**Product images:**


WB Suggested Anti-KLHL20 Antibody Titration:  
0.2-1 ug/ml; ELISA Titer: 1: 1562500; Positive  
Control: HeLa cell lysate  
There is BioGPS gene  
expression data showing that KLHL20 is  
expressed in HeLa