

## Product datasheet for **TA334537**

### RTDR1 (RSPH14) Rabbit Polyclonal Antibody

#### Product data:

Product Type:	Primary Antibodies
Applications:	WB
Recommended Dilution:	WB
Reactivity:	Human
Host:	Rabbit
Isotype:	IgG
Clonality:	Polyclonal
Immunogen:	The immunogen for anti-RTDR1 antibody: synthetic peptide directed towards the middle region of human RTDR1. Synthetic peptide located within the following region: IARLNATKALTMLAEAPEGRKALQTHVPTFRAMEVETYEKPQVAEALQRA
Formulation:	Liquid. Purified antibody supplied in 1x PBS buffer with 0.09% (w/v) sodium azide and 2% sucrose. <i>Note that this product is shipped as lyophilized powder to China customers.</i>
Purification:	Affinity Purified
Conjugation:	Unconjugated
Storage:	Store at -20°C as received.
Stability:	Stable for 12 months from date of receipt.
Predicted Protein Size:	38 kDa
Gene Name:	radial spoke head 14 homolog
Database Link:	<a href="#">NP_055248</a> <a href="#">Entrez Gene 27156 Human</a> <a href="#">Q9UHP6</a>
Background:	The specific function of the protein remains unknown. This gene encodes a protein with no known function but with slight similarity to a yeast vacuolar protein. The gene is located in a region deleted in pediatric rhabdoid tumors of the brain, kidney and soft tissues, but mutations in this gene have not been associated with the disease.
Synonyms:	RTDR1

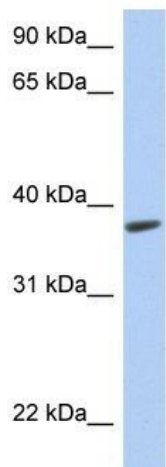


[View online »](#)

**Note:** Immunogen Sequence Homology: Human: 100%; Pig: 79%; Bovine: 79%; Guinea pig: 79%; Horse: 77%

**Protein Families:** Druggable Genome

**Product images:**



WB Suggested Anti-RTDR1 Antibody Titration: 0.2-1 ug/ml; ELISA Titer: 1: 312500; Positive Control: Human Muscle