

## Product datasheet for **TA334536**

### RTDR1 (RSPH14) Rabbit Polyclonal Antibody

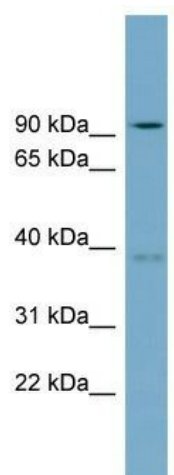
#### Product data:

Product Type:	Primary Antibodies
Applications:	WB
Recommended Dilution:	WB
Reactivity:	Human
Host:	Rabbit
Isotype:	IgG
Clonality:	Polyclonal
Immunogen:	The immunogen for anti-RTDR1 antibody: synthetic peptide directed towards the N terminal of human RTDR1. Synthetic peptide located within the following region: MAHSQNSLELPININATQITTAYGHRALPKLKEELQSEDLQTRQKALMAL
Formulation:	Liquid. Purified antibody supplied in 1x PBS buffer with 0.09% (w/v) sodium azide and 2% sucrose. <i>Note that this product is shipped as lyophilized powder to China customers.</i>
Purification:	Affinity Purified
Conjugation:	Unconjugated
Storage:	Store at -20°C as received.
Stability:	Stable for 12 months from date of receipt.
Predicted Protein Size:	38 kDa
Gene Name:	radial spoke head 14 homolog
Database Link:	<a href="#">NP_055248</a> <a href="#">Entrez Gene 27156 Human</a> <a href="#">Q9UHP6</a>
Background:	The specific function of the protein remains unknown.
Synonyms:	RTDR1
Note:	Immunogen Sequence Homology: Human: 100%; Dog: 85%; Pig: 85%; Bovine: 85%
Protein Families:	Druggable Genome



[View online »](#)

## Product images:



WB Suggested Anti-RTDR1 Antibody Titration: 0.2-1 ug/ml; ELISA Titer: 1: 312500; Positive Control: COLO205 cell lysate