

Product datasheet for **TA334535**

Cpne7 Rabbit Polyclonal Antibody

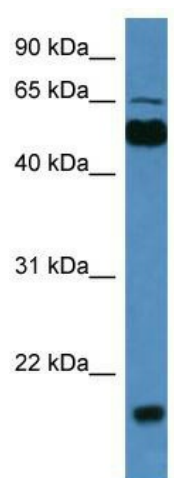
Product data:

Product Type:	Primary Antibodies
Applications:	WB
Recommended Dilution:	WB
Reactivity:	Rat
Host:	Rabbit
Isotype:	IgG
Clonality:	Polyclonal
Immunogen:	The immunogen for anti-Cpne7 antibody: synthetic peptide corresponding to a region of Rat. Synthetic peptide located within the following region: GDDGILRSRGPALRDIVQFVPFRELKNASPAALAKCVLAEVPKQVVEY
Formulation:	Liquid. Purified antibody supplied in 1x PBS buffer with 0.09% (w/v) sodium azide and 2% sucrose. <i>Note that this product is shipped as lyophilized powder to China customers.</i>
Purification:	Affinity Purified
Conjugation:	Unconjugated
Storage:	Store at -20°C as received.
Stability:	Stable for 12 months from date of receipt.
Predicted Protein Size:	54 kDa
Gene Name:	copine 7
Database Link:	NP_001101924 Entrez Gene 361433 Rat H1UBN0
Background:	The function of Cpne7 remains unknown.
Synonyms:	MGC34192
Note:	Immunogen Sequence Homology: Dog: 100%; Pig: 100%; Horse: 100%; Human: 100%; Mouse: 100%; Bovine: 100%; Guinea pig: 100%; Rat: 93%; Zebrafish: 92%; Rabbit: 85%



[View online »](#)

Product images:



WB Suggested Anti-Cpne7 Antibody Titration: 0.2-1 ug/ml; ELISA Titer: 1: 312500; Positive Control: Rat Brain