

## Product datasheet for **TA334534**

### Cpne7 Rabbit Polyclonal Antibody

#### Product data:

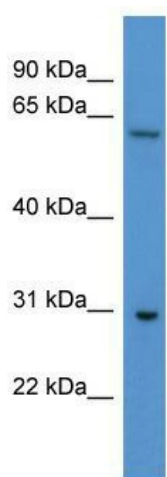
Product Type:	Primary Antibodies
Applications:	WB
Recommended Dilution:	WB
Reactivity:	Mouse
Host:	Rabbit
Isotype:	IgG
Clonality:	Polyclonal
Immunogen:	The immunogen for anti-Cpne7 antibody: synthetic peptide corresponding to a region of Mouse. Synthetic peptide located within the following region: GARIPPKYEVSHDFAINFNPEDDECEGIQGWVEAYQNCLPKVQLYGPTNV
Formulation:	Liquid. Purified antibody supplied in 1x PBS buffer with 0.09% (w/v) sodium azide and 2% sucrose. <i>Note that this product is shipped as lyophilized powder to China customers.</i>
Purification:	Affinity Purified
Conjugation:	Unconjugated
Storage:	Store at -20°C as received.
Stability:	Stable for 12 months from date of receipt.
Predicted Protein Size:	61 kDa
Gene Name:	copine VII
Database Link:	<a href="#">NP_733785</a> <a href="#">Entrez Gene 102278 Mouse Q0VE82</a>
Background:	Calcium-dependent membrane-binding proteins may regulate molecular events at the interface of the cell membrane and cytoplasm. This gene is one of several genes that encodes a calcium-dependent protein containing two N-terminal type II C2 domains and an integrin A domain-like sequence in the C-terminus.
Synonyms:	MGC34192



[View online »](#)

**Note:** Immunogen Sequence Homology: Dog: 100%; Pig: 100%; Rat: 100%; Human: 100%; Mouse: 100%; Bovine: 100%; Zebrafish: 100%; Guinea pig: 100%; Horse: 90%; Rabbit: 85%

### Product images:



WB Suggested Anti-Cpne7 Antibody Titration: 0.2-1 ug/ml; ELISA Titer: 1: 312500; Positive Control: Mouse Brain