

Product datasheet for **TA334530**

CLUL1 Rabbit Polyclonal Antibody

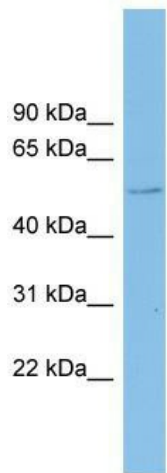
Product data:

Product Type:	Primary Antibodies
Applications:	WB
Recommended Dilution:	WB
Reactivity:	Human
Host:	Rabbit
Isotype:	IgG
Clonality:	Polyclonal
Immunogen:	The immunogen for anti-CLUL1 antibody: synthetic peptide directed towards the middle region of human CLUL1. Synthetic peptide located within the following region: TEIIFNSIQVVPRIHEGNISKQDETMMTDLNILPSSNFTLKIPLEESAES
Formulation:	Liquid. Purified antibody supplied in 1x PBS buffer with 0.09% (w/v) sodium azide and 2% sucrose. <i>Note that this product is shipped as lyophilized powder to China customers.</i>
Purification:	Affinity Purified
Conjugation:	Unconjugated
Storage:	Store at -20°C as received.
Stability:	Stable for 12 months from date of receipt.
Predicted Protein Size:	54 kDa
Gene Name:	clusterin like 1
Database Link:	NP_055225 Entrez Gene 27098 Human Q15846
Background:	The function of this protein remains unknown.
Synonyms:	RA337M
Note:	Immunogen Sequence Homology: Human: 100%; Dog: 86%; Bovine: 82%
Protein Families:	Secreted Protein



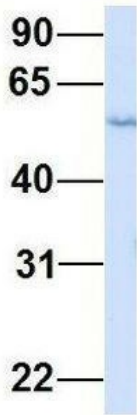
[View online »](#)

Product images:



WB Suggested Anti-CLUL1 Antibody Titration: 0.2-1 ug/ml; ELISA Titer: 1: 1562500; Positive Control: COLO205 cell lysate

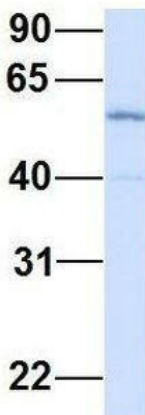
CLUL1



Rabbit Anti-CLUL1
Sample Type: Human Adult Placenta
Antibody Concentration: 1ug/mL

Host: Rabbit; Target Name: CLUL1; Sample Tissue: Human Adult Placenta; Antibody Dilution: 1.0 ug/ml

CLUL1



Rabbit Anti-CLUL1
Sample Type: Human Fetal Muscle
Antibody Concentration: 1ug/mL

Host: Rabbit; Target Name: CLUL1; Sample Tissue: Human Fetal Muscle; Antibody Dilution: 1.0 ug/ml

