

Product datasheet for **TA334525**

Hsp22 (HSPB8) Rabbit Polyclonal Antibody

Product data:

Product Type:	Primary Antibodies
Applications:	WB
Recommended Dilution:	WB
Reactivity:	Human
Host:	Rabbit
Isotype:	IgG
Clonality:	Polyclonal
Immunogen:	The immunogen for anti-HSPB8 antibody: synthetic peptide directed towards the N terminal of human HSPB8. Synthetic peptide located within the following region: ADGQMPFSCHYPSRLRRDPFRDSPLSSRLDDGFGMDPFPDDLTASWPDW
Formulation:	Liquid. Purified antibody supplied in 1x PBS buffer with 0.09% (w/v) sodium azide and 2% sucrose. <i>Note that this product is shipped as lyophilized powder to China customers.</i>
Purification:	Affinity Purified
Conjugation:	Unconjugated
Storage:	Store at -20°C as received.
Stability:	Stable for 12 months from date of receipt.
Predicted Protein Size:	21 kDa
Gene Name:	heat shock protein family B (small) member 8
Database Link:	NP_055180 Entrez Gene 26353 Human Q9UJY1



[View online »](#)

Background:

HSPB8 belongs to the superfamily of small heat-shock proteins containing a conservative alpha-crystallin domain at the C-terminal part of the molecule. The expression of HSPB8 protein is induced by estrogen in estrogen receptor-positive breast cancer cells, and this protein also functions as a chaperone in association with Bag3, a stimulator of macroautophagy. Thus, HSPB8 appears to be involved in regulation of cell proliferation, apoptosis, and carcinogenesis, and mutations in the encoding HSPB8 gene have been associated with different neuromuscular diseases, including Charcot-Marie-Tooth disease. The protein encoded by this gene belongs to the superfamily of small heat-shock proteins containing a conservative alpha-crystallin domain at the C-terminal part of the molecule. The expression of this gene is induced by estrogen in estrogen receptor-positive breast cancer cells, and this protein also functions as a chaperone in association with Bag3, a stimulator of macroautophagy. Thus, this gene appears to be involved in regulation of cell proliferation, apoptosis, and carcinogenesis, and mutations in this gene have been associated with different neuromuscular diseases, including Charcot-Marie-Tooth disease. Publication Note: This RefSeq record includes a subset of the publications that are available for this gene. Please see the Entrez Gene record to access additional publications.

Synonyms:

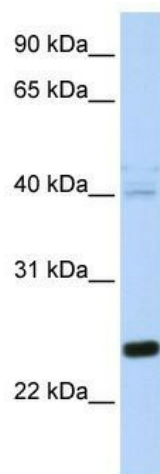
CMT2L; DHMN2; E2IG1; H11; HMN2; HMN2A; HSP22

Note:

Immunogen Sequence Homology: Pig: 100%; Rat: 100%; Horse: 100%; Human: 100%; Mouse: 100%; Bovine: 100%; Guinea pig: 100%; Dog: 86%

Protein Families:

Druggable Genome, Protein Kinase

Product images:

WB Suggested Anti-HSPB8 Antibody Titration: 0.2-1 ug/ml; ELISA Titer: 1: 62500; Positive Control: Human Placenta