

## Product datasheet for **TA334524**

### Opticin (OPTC) Rabbit Polyclonal Antibody

#### Product data:

Product Type:	Primary Antibodies
Applications:	WB
Recommended Dilution:	WB
Reactivity:	Human
Host:	Rabbit
Isotype:	IgG
Clonality:	Polyclonal
Immunogen:	The immunogen for anti-OPTC antibody: synthetic peptide directed towards the C terminal of human OPTC. Synthetic peptide located within the following region: LSDNLLDSIPGPLPLSLRSVHLQNNLIETMQRDVFCDPEEHKHTRRQLED
Formulation:	Liquid. Purified antibody supplied in 1x PBS buffer with 0.09% (w/v) sodium azide and 2% sucrose. <i>Note that this product is shipped as lyophilized powder to China customers.</i>
Purification:	Affinity Purified
Conjugation:	Unconjugated
Storage:	Store at -20°C as received.
Stability:	Stable for 12 months from date of receipt.
Predicted Protein Size:	35 kDa
Gene Name:	opticin
Database Link:	<a href="#">NP_055174</a> <a href="#">Entrez Gene 26254 Human</a> <a href="#">Q9UBM4</a>



[View online »](#)

**Background:**

Opticin belongs to class III of the small leucine-rich repeat protein (SLRP) family. Members of this family are typically associated with the extracellular matrix. Opticin is present in significant quantities in the vitreous of the eye and also localizes to the cornea, iris, ciliary body, optic nerve, choroid, retina, and fetal liver. Opticin may noncovalently bind collagen fibrils and regulate fibril morphology, spacing, and organization. The opticin gene is mapped to a region of chromosome 1 that is associated with the inherited eye diseases age-related macular degeneration (AMD) and posterior column ataxia with retinosa pigmentosa (AXPC1). Opticin belongs to class III of the small leucine-rich repeat protein (SLRP) family. Members of this family are typically associated with the extracellular matrix. Opticin is present in significant quantities in the vitreous of the eye and also localizes to the cornea, iris, ciliary body, optic nerve, choroid, retina, and fetal liver. Opticin may noncovalently bind collagen fibrils and regulate fibril morphology, spacing, and organization. The opticin gene is mapped to a region of chromosome 1 that is associated with the inherited eye diseases age-related macular degeneration (AMD) and posterior column ataxia with retinosa pigmentosa (AXPC1).

**Synonyms:**

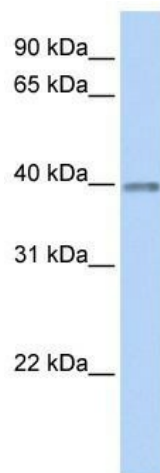
OPT

**Note:**

Immunogen Sequence Homology: Dog: 100%; Pig: 100%; Rat: 100%; Human: 100%; Horse: 92%; Rabbit: 92%; Mouse: 85%; Guinea pig: 85%; Zebrafish: 83%; Bovine: 77%

**Protein Families:**

Secreted Protein

**Product images:**

WB Suggested Anti-OPTC Antibody Titration: 0.2-1 ug/ml; ELISA Titer: 1: 12500; Positive Control: Human heart