

## Product datasheet for **TA334523**

### RAB26 Rabbit Polyclonal Antibody

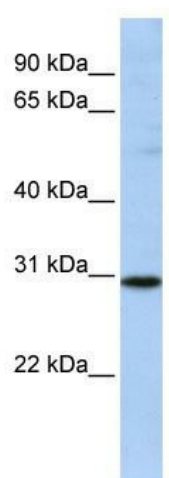
#### Product data:

Product Type:	Primary Antibodies
Applications:	WB
Recommended Dilution:	WB
Reactivity:	Human
Host:	Rabbit
Isotype:	IgG
Clonality:	Polyclonal
Immunogen:	The immunogen for anti-RAB26 antibody: synthetic peptide directed towards the N terminal of human RAB26. Synthetic peptide located within the following region: SRKKTPKSKGASTPAASTLPTANGARPARSGTALSGPDAPPNGPLQPGRP
Formulation:	Liquid. Purified antibody supplied in 1x PBS buffer with 0.09% (w/v) sodium azide and 2% sucrose. <i>Note that this product is shipped as lyophilized powder to China customers.</i>
Purification:	Affinity Purified
Conjugation:	Unconjugated
Storage:	Store at -20°C as received.
Stability:	Stable for 12 months from date of receipt.
Predicted Protein Size:	28 kDa
Gene Name:	RAB26, member RAS oncogene family
Database Link:	<a href="#">NP_055168</a> <a href="#">Entrez Gene 25837 Human</a> <a href="#">Q9ULW5</a>
Background:	RAB26 belongs to the small GTPase superfamily, Rab family. It participates in exocrine secretion: regulates the secretion of acinar granules in the parotid gland.
Synonyms:	V46133
Note:	Immunogen Sequence Homology: Human: 100%; Rat: 79%
Protein Families:	Druggable Genome



[View online »](#)

## Product images:



WB Suggested Anti-RAB26 Antibody Titration: 0.2-1 ug/ml; ELISA Titer: 1: 62500; Positive Control: MCF7 cell lysate RAB26 is strongly supported by BioGPS gene expression data to be expressed in Human MCF7 cells