

Product datasheet for **TA334522**

TBC1D22A Rabbit Polyclonal Antibody

Product data:

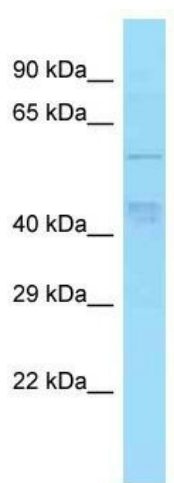
Product Type:	Primary Antibodies
Applications:	WB
Recommended Dilution:	WB
Reactivity:	Human
Host:	Rabbit
Isotype:	IgG
Clonality:	Polyclonal
Immunogen:	The immunogen for anti-TBC1D22A antibody is: synthetic peptide directed towards the middle region of TBC1D22A. Synthetic peptide located within the following region: MTWKLLSGYLPANVDRRPATLQRKQKEYFAFIEHYYSRNDDEVHQDQTYRQ
Formulation:	Liquid. Purified antibody supplied in 1x PBS buffer with 0.09% (w/v) sodium azide and 2% sucrose. <i>Note that this product is shipped as lyophilized powder to China customers.</i>
Purification:	Affinity Purified
Conjugation:	Unconjugated
Storage:	Store at -20°C as received.
Stability:	Stable for 12 months from date of receipt.
Predicted Protein Size:	59 kDa
Gene Name:	TBC1 domain family member 22A
Database Link:	NP_055161 Entrez Gene 25771 Human Q8WUA7
Background:	TBC1D22A contains 1 Rab-GAP TBC domain. It may act as a GTPase-activating protein for Rab family protein(s).
Synonyms:	C22orf4; HSC79E021
Note:	Immunogen Sequence Homology: Pig: 100%; Human: 100%; Mouse: 100%; Bovine: 100%; Guinea pig: 100%; Dog: 93%; Rat: 93%; Horse: 93%; Zebrafish: 93%; Rabbit: 86%



[View online »](#)

Protein Families: Druggable Genome

Product images:



WB Suggested Anti-TBC1D22A Antibody;
Titration: 1.0 ug/ml; Positive Control: HT1080
Whole Cell There is BioGPS gene expression data
showing that TBC1D22A is expressed in HT1080