

Product datasheet for **TA334520**

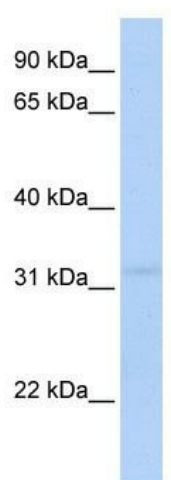
MTCH2 Rabbit Polyclonal Antibody

Product data:

Product Type:	Primary Antibodies
Applications:	WB
Recommended Dilution:	WB
Reactivity:	Human
Host:	Rabbit
Isotype:	IgG
Clonality:	Polyclonal
Immunogen:	The immunogen for anti-MTCH2 antibody: synthetic peptide directed towards the N terminal of human MTCH2. Synthetic peptide located within the following region: TIGRNIFGRQVCQLPGLFSYAQHIASIDGRRGLFTGLTPRLCSGVLGTW
Formulation:	Liquid. Purified antibody supplied in 1x PBS buffer with 0.09% (w/v) sodium azide and 2% sucrose. <i>Note that this product is shipped as lyophilized powder to China customers.</i>
Purification:	Affinity Purified
Conjugation:	Unconjugated
Storage:	Store at -20°C as received.
Stability:	Stable for 12 months from date of receipt.
Predicted Protein Size:	33 kDa
Gene Name:	mitochondrial carrier 2
Database Link:	NP_055157 Entrez Gene 23788 Human Q9Y6C9
Background:	MTCH2 belongs to the mitochondrial carrier family. It contains 2 Solcar repeats. The substrate transported is not yet known. It induces mitochondrial depolarization.
Synonyms:	HSPC032; MIMP; SLC25A50
Note:	Immunogen Sequence Homology: Rat: 100%; Human: 100%; Mouse: 100%; Rabbit: 100%; Pig: 93%; Horse: 93%; Bovine: 93%; Guinea pig: 93%; Dog: 79%



[View online »](#)

Product images:


WB Suggested Anti-MTCH2 Antibody Titration:
 0.2-1 ug/ml; ELISA Titer: 1: 312500; Positive
 Control: 721_B cell lysate MTCH2 is supported by
 BioGPS gene expression data to be expressed in
 721_B