

Product datasheet for TA334517

PPIL2 Rabbit Polyclonal Antibody

Product data:

Product Type:	Primary Antibodies
Applications:	WB
Recommended Dilution:	WB
Reactivity:	Human
Host:	Rabbit
Isotype:	IgG
Clonality:	Polyclonal
Immunogen:	The immunogen for anti-PPIL2 antibody: synthetic peptide directed towards the middle region of human PPIL2. Synthetic peptide located within the following region: MKIIDPDEEKAKQDPSYLLKNTNAETRETLQELYKEFKGDEILAATMKAP
Formulation:	Liquid. Purified antibody supplied in 1x PBS buffer with 0.09% (w/v) sodium azide and 2% sucrose. <i>Note that this product is shipped as lyophilized powder to China customers.</i>
Purification:	Affinity Purified
Conjugation:	Unconjugated
Storage:	Store at -20°C as received.
Stability:	Stable for 12 months from date of receipt.
Predicted Protein Size:	59 kDa
Gene Name:	peptidylprolyl isomerase like 2
Database Link:	NP_055152 Entrez Gene 23759 Human Q13356
Background:	This gene is a member of the cyclophilin family of peptidylprolyl isomerases. The cyclophilins are a highly conserved ubiquitous family, members of which play an important role in protein folding, immunosuppression by cyclosporin A, and infection of HIV-1 virions. This protein interacts with the proteinase inhibitor eglin c and is localized in the nucleus. Multiple transcript variants encoding different isoforms have been found for this gene. [provided by RefSeq, Jul 2008]



[View online »](#)

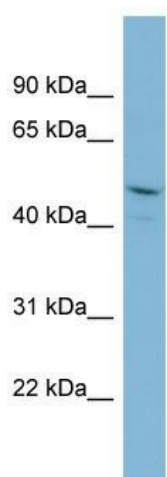
Synonyms: CYC4; Cyp-60; CYP60; hCyP-60; UBOX7

Note: Immunogen Sequence Homology: Dog: 100%; Pig: 100%; Rat: 100%; Human: 100%; Mouse: 100%; Bovine: 100%; Zebrafish: 100%; Guinea pig: 100%; Rabbit: 86%

Protein Families: Druggable Genome

Protein Pathways: Ubiquitin mediated proteolysis

Product images:



WB Suggested Anti-PPIL2 Antibody Titration: 0.2-1 ug/ml; Positive Control: COLO205 cell lysate