

Product datasheet for **TA334516**

EDC4 Rabbit Polyclonal Antibody

Product data:

Product Type:	Primary Antibodies
Applications:	WB
Recommended Dilution:	WB
Reactivity:	Human
Host:	Rabbit
Isotype:	IgG
Clonality:	Polyclonal
Immunogen:	The immunogen for anti-EDC4 antibody: synthetic peptide directed towards the N terminal of human EDC4. Synthetic peptide located within the following region: LQEKQVICLSGDDSSSTCIGILAKEVEIVASSDSSISSKARGSNKVKIQPV
Formulation:	Liquid. Purified antibody supplied in 1x PBS buffer with 0.09% (w/v) sodium azide and 2% sucrose. <i>Note that this product is shipped as lyophilized powder to China customers.</i>
Purification:	Affinity Purified
Conjugation:	Unconjugated
Storage:	Store at -20°C as received.
Stability:	Stable for 12 months from date of receipt.
Predicted Protein Size:	152 kDa
Gene Name:	enhancer of mRNA decapping 4
Database Link:	NP_055144 Entrez Gene 23644 Human Q6P2E9
Background:	In the process of mRNA degradation, EDC4 seems to play a role in mRNA decapping. It is the component of a complex containing DCP2 and DCP1A which functions in decapping of ARE-containing mRNAs. EDC4 promotes complex formation between DCP1A and DCP2. It enhances the catalytic activity of DCP2 (in vitro).
Synonyms:	Ge-1; GE1; HEDL5; HEDLS; RCD-8; RCD8

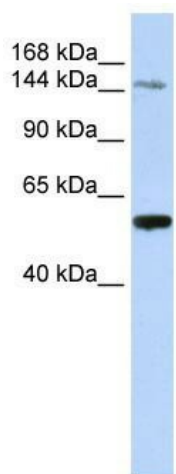


[View online »](#)

Note: Immunogen Sequence Homology: Dog: 100%; Pig: 100%; Rat: 100%; Horse: 100%; Human: 100%; Mouse: 100%; Bovine: 100%; Rabbit: 100%; Guinea pig: 100%; Zebrafish: 92%

Protein Pathways: RNA degradation

Product images:



WB Suggested Anti-EDC4 Antibody Titration: 0.2-1 ug/ml; ELISA Titer: 1: 12500; Positive Control: Human Liver