

## Product datasheet for **TA334513**

### Hebp2 Rabbit Polyclonal Antibody

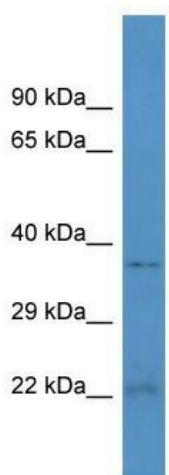
#### Product data:

Product Type:	Primary Antibodies
Applications:	WB
Recommended Dilution:	WB
Reactivity:	Rat
Host:	Rabbit
Isotype:	IgG
Clonality:	Polyclonal
Immunogen:	The immunogen for anti-Hebp2 antibody is: synthetic peptide directed towards the N-terminal region of RAT Hebp2. Synthetic peptide located within the following region: EMPSWKAPENIDPQGSYEIRHYGPAKWVSTCVESLDWDSAIQTGFTKLN
Formulation:	Liquid. Purified antibody supplied in 1x PBS buffer with 0.09% (w/v) sodium azide and 2% sucrose. <i>Note that this product is shipped as lyophilized powder to China customers.</i>
Purification:	Affinity Purified
Conjugation:	Unconjugated
Storage:	Store at -20°C as received.
Stability:	Stable for 12 months from date of receipt.
Predicted Protein Size:	22 kDa
Gene Name:	heme binding protein 2
Database Link:	<a href="#">NP_001100985</a> <a href="#">Entrez Gene 308632 Rat</a>
Background:	The function of this protein remains unknown.
Synonyms:	C6orf34; C6ORF34B; KIAA1244; PP23; SOUL
Note:	Immunogen Sequence Homology: Pig: 100%; Rat: 100%; Human: 100%; Mouse: 100%; Dog: 93%; Bovine: 93%; Rabbit: 93%; Horse: 92%



[View online »](#)

## Product images:



Host: Rabbit  
Target Name: Hebp2  
Sample Tissue: Rat Lung Lysate  
Antibody Dilution: 1.0 $\mu$ g/ml

Host: Rabbit; Target Name: Hebp2; Sample Tissue: Rat Lung lysates; Antibody Dilution: 1.0 ug/ml