

Product datasheet for **TA334511**

SMUG1 Rabbit Polyclonal Antibody

Product data:

Product Type:	Primary Antibodies
Applications:	WB
Recommended Dilution:	WB
Reactivity:	Human
Host:	Rabbit
Isotype:	IgG
Clonality:	Polyclonal
Immunogen:	The immunogen for anti-SMUG1 antibody: synthetic peptide directed towards the middle region of human SMUG1. Synthetic peptide located within the following region: IVGPVLTTPPQEHPKRPVGLGECPEVSGARFWGFFRNLCGQPEVFFHHC
Formulation:	Liquid. Purified antibody supplied in 1x PBS buffer with 0.09% (w/v) sodium azide and 2% sucrose. <i>Note that this product is shipped as lyophilized powder to China customers.</i>
Purification:	Affinity Purified
Conjugation:	Unconjugated
Storage:	Store at -20°C as received.
Stability:	Stable for 12 months from date of receipt.
Predicted Protein Size:	30 kDa
Gene Name:	single-strand-selective monofunctional uracil-DNA glycosylase 1
Database Link:	NP_055126 Entrez Gene 23583 Human Q53HV7
Background:	SMUG1 is a glycosylase that removes uracil from single- and double-stranded DNA in nuclear chromatin, thus contributing to base excision repair. SMUG1 is a glycosylase that removes uracil from single- and double-stranded DNA in nuclear chromatin, thus contributing to base excision repair. [supplied by OMIM]. Publication Note: This RefSeq record includes a subset of the publications that are available for this gene. Please see the Entrez Gene record to access additional publications.



[View online »](#)

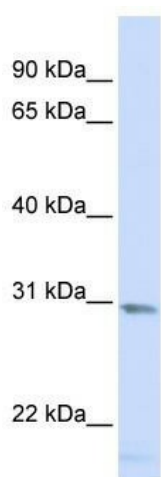
Synonyms: FDG; HMUDG; UNG3

Note: Immunogen Sequence Homology: Pig: 100%; Horse: 100%; Human: 100%; Mouse: 100%; Rat: 93%; Bovine: 93%; Rabbit: 93%; Guinea pig: 93%; Dog: 91%

Protein Families: Druggable Genome

Protein Pathways: Base excision repair

Product images:



WB Suggested Anti-SMUG1 Antibody Titration:
0.2-1 ug/ml; ELISA Titer: 1: 62500; Positive
Control: HeLa cell lysate SMUG1 is supported by
BioGPS gene expression data to be expressed in
HeLa