

Product datasheet for **TA334510**

TGDS Rabbit Polyclonal Antibody

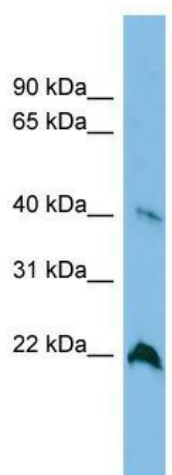
Product data:

| | |
|-------------------------|--|
| Product Type: | Primary Antibodies |
| Applications: | WB |
| Recommended Dilution: | WB |
| Reactivity: | Human |
| Host: | Rabbit |
| Isotype: | IgG |
| Clonality: | Polyclonal |
| Immunogen: | The immunogen for anti-TGDS antibody: synthetic peptide directed towards the middle region of human TGDS. Synthetic peptide located within the following region: DEYGGSLDKFEDESSPKQPTNPYASSKAAAEFCVQSYWEQYKFPVVITR |
| Formulation: | Liquid. Purified antibody supplied in 1x PBS buffer with 0.09% (w/v) sodium azide and 2% sucrose. |
| Purification: | Affinity Purified |
| Conjugation: | Unconjugated |
| Storage: | Store at -20°C as received. |
| Stability: | Stable for 12 months from date of receipt. |
| Predicted Protein Size: | 40 kDa |
| Gene Name: | TDP-glucose 4,6-dehydratase |
| Database Link: | NP_055120 Entrez Gene 23483 Human O95455 |
| Background: | The function of this protein remains unknown. |
| Synonyms: | CATMANS; SDR2E1; TDPGD |
| Note: | Immunogen Sequence Homology: Dog: 100%; Pig: 100%; Rat: 100%; Horse: 100%; Human: 100%; Mouse: 100%; Bovine: 100%; Rabbit: 100%; Guinea pig: 100%; Zebrafish: 83% |



[View online »](#)

Product images:



WB Suggested Anti-TGDS Antibody Titration: 0.2-1 ug/ml; ELISA Titer: 1: 312500; Positive Control: A549 cell lysate