

Product datasheet for **TA334508**

ETHE1 Rabbit Polyclonal Antibody

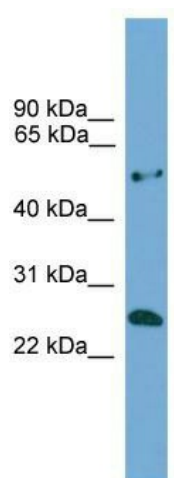
Product data:

Product Type:	Primary Antibodies
Applications:	WB
Recommended Dilution:	WB
Reactivity:	Human
Host:	Rabbit
Isotype:	IgG
Clonality:	Polyclonal
Immunogen:	The immunogen for anti-ETHE1 antibody: synthetic peptide directed towards the middle region of human ETHE1. Synthetic peptide located within the following region: RSLLPGCQSVISRLSGAQADLHIEDGDSIRFGRFALETRASPGHTPGCVT
Formulation:	Liquid. Purified antibody supplied in 1x PBS buffer with 0.09% (w/v) sodium azide and 2% sucrose. <i>Note that this product is shipped as lyophilized powder to China customers.</i>
Purification:	Affinity Purified
Conjugation:	Unconjugated
Storage:	Store at -20°C as received.
Stability:	Stable for 12 months from date of receipt.
Predicted Protein Size:	28 kDa
Gene Name:	ETHE1, persulfide dioxygenase
Database Link:	NP_055112 Entrez Gene 23474 Human O95571
Background:	This gene encodes a sulfur dioxygenase that localizes within the mitochondrial matrix. The enzyme functions in sulfide catabolism. Mutations in this gene result in ethylmalonic encephalopathy.
Synonyms:	HSCO; YF13H12
Note:	Immunogen Sequence Homology: Dog: 100%; Pig: 100%; Rat: 100%; Horse: 100%; Human: 100%; Mouse: 100%; Bovine: 100%; Guinea pig: 100%



[View online »](#)

Product images:



WB Suggested Anti-ETHE1 Antibody Titration: 0.2-1 ug/ml; ELISA Titer: 1: 62500; Positive Control: COLO205 cell lysate. ETHE1 is supported by BioGPS gene expression data to be expressed in COLO205