

Product datasheet for **TA334504**

MEMO1 Rabbit Polyclonal Antibody

Product data:

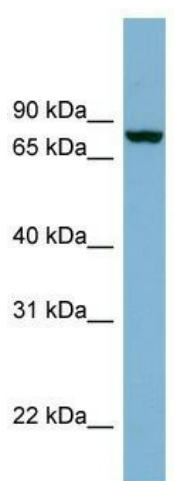
Product Type:	Primary Antibodies
Applications:	WB
Recommended Dilution:	WB
Reactivity:	Human
Host:	Rabbit
Isotype:	IgG
Clonality:	Polyclonal
Immunogen:	The immunogen for anti-NCDN antibody: synthetic peptide directed towards the N terminal of human NCDN. Synthetic peptide located within the following region: MSCCDLAAAGQLGKASIMASDCEPALNQAEGRNPTLERYLGALREAKNDS
Formulation:	Liquid. Purified antibody supplied in 1x PBS buffer with 0.09% (w/v) sodium azide and 2% sucrose. <i>Note that this product is shipped as lyophilized powder to China customers.</i>
Purification:	Affinity Purified
Conjugation:	Unconjugated
Storage:	Store at -20°C as received.
Stability:	Stable for 12 months from date of receipt.
Predicted Protein Size:	79 kDa
Gene Name:	mediator of cell motility 1
Database Link:	NP_057039 Entrez Gene 51072 Human Q9Y316
Background:	This gene encodes a leucine-rich cytoplasmic protein, which is highly similar to a mouse protein that negatively regulates Ca/calmodulin-dependent protein kinase II phosphorylation and may be essential for spatial learning processes. Several alternatively spliced transcript variants of this gene have been described. [provided by RefSeq, Jul 2008]
Synonyms:	C2orf4; CGI-27; MEMO; NS5ATP7



[View online »](#)

Note: Immunogen Sequence Homology: Pig: 100%; Rat: 100%; Human: 100%; Guinea pig: 100%; Dog: 93%; Horse: 93%; Mouse: 93%; Bovine: 93%; Rabbit: 93%

Product images:



WB Suggested Anti-NCDN Antibody Titration: 0.2-1 ug/ml; ELISA Titer: 1: 1562500; Positive Control: Human brain